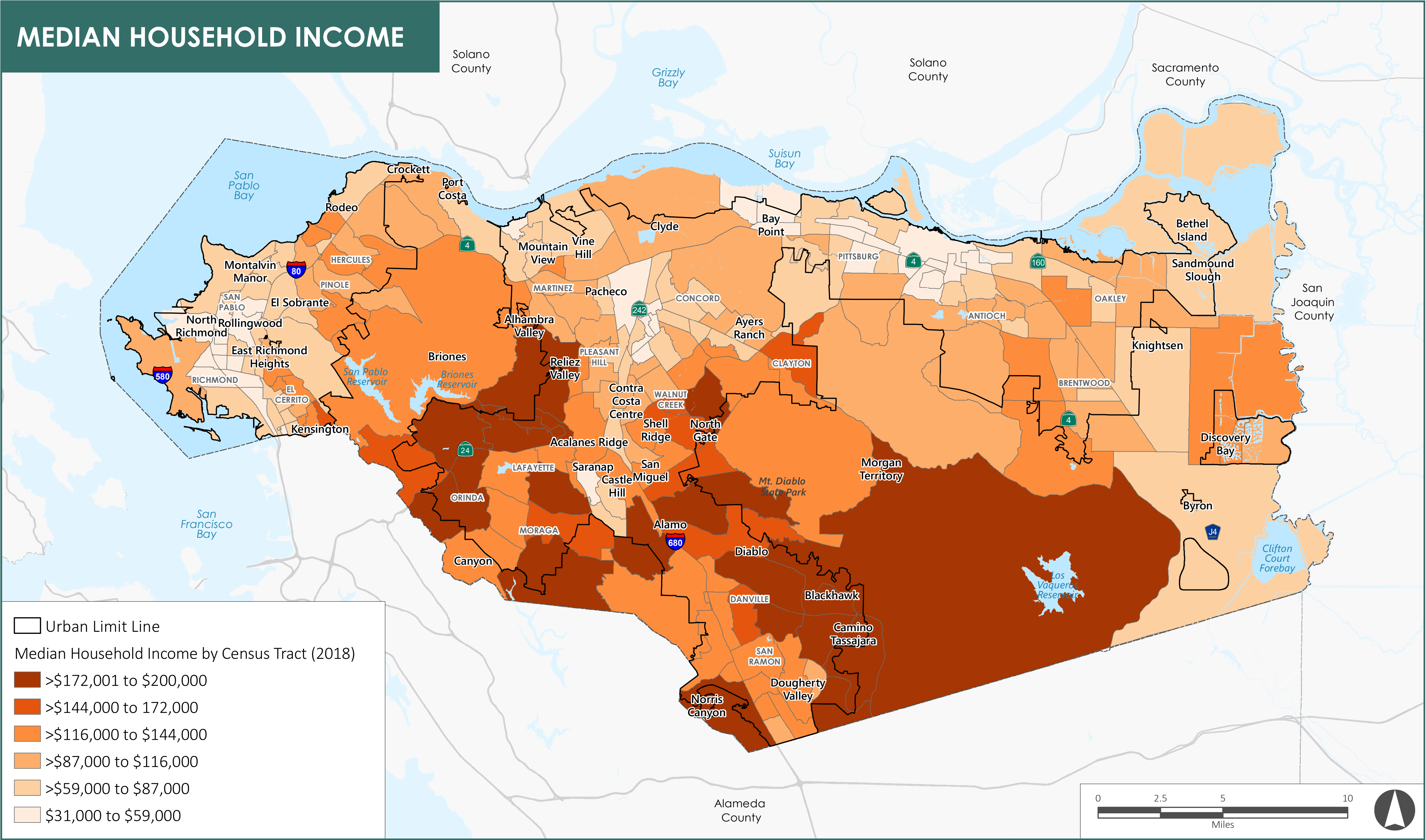


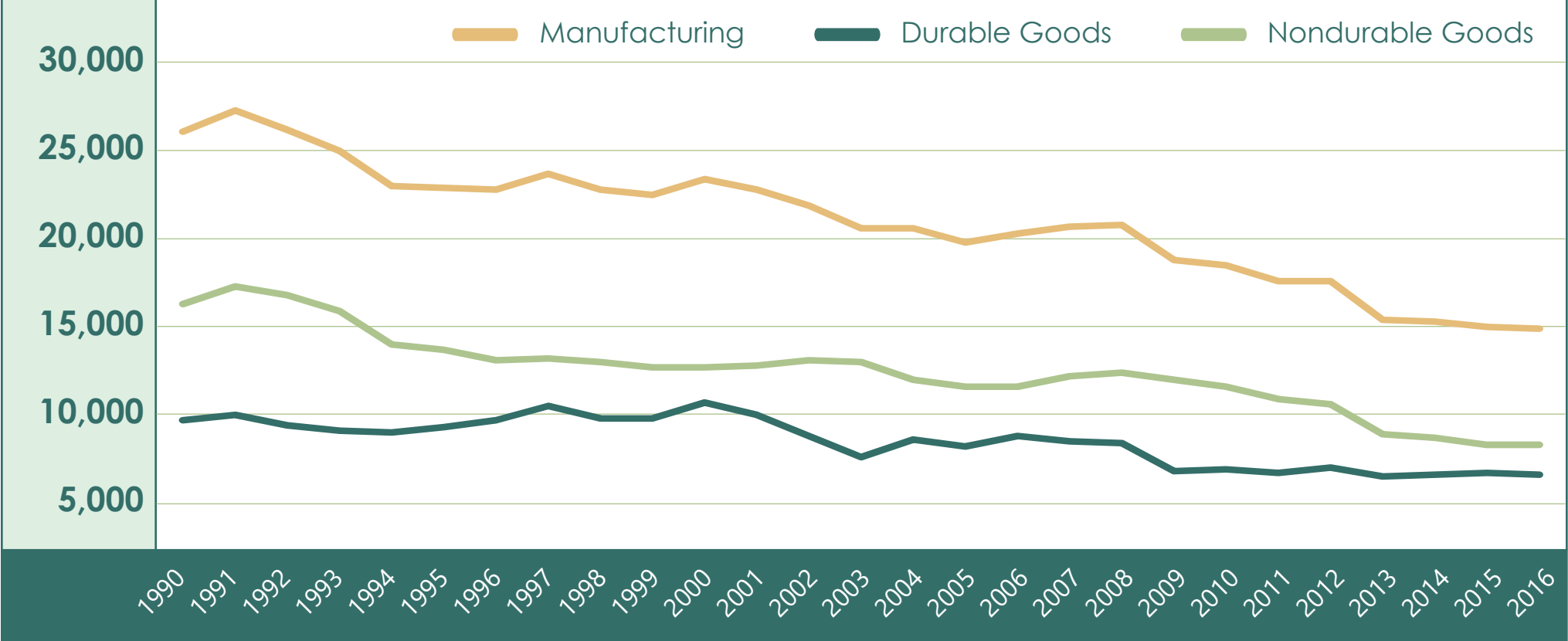


ECONOMIC DEVELOPMENT

MEDIAN HOUSEHOLD INCOME



DURABLE AND NON-DURABLE MANUFACTURING EMPLOYMENT, CONTRA COSTA COUNTY



EMPLOYMENT BY INDUSTRY

CONTRA COSTA COUNTY	2010		2017		% CHANGE 2010-2017
	NUMBER	PERCENT	NUMBER	PERCENT	
Natural Resources and Mining	1,755	0.6%	852	0.2%	-51.5%
Construction	17,281	5.5%	25,420	6.9%	47.1%
Manufacturing	17,869	5.7%	15,622	4.3%	-12.6%
Wholesale Trade	7,600	2.4%	10,591	2.9%	39.4%
Retail Trade	40,313	12.9%	43,053	11.7%	6.8%
Transportation, Warehousing, & Utilities	7,511	2.4%	11,234	3.1%	49.6%
Information	9,568	3.1%	7,996	2.2%	-16.4%
Finance & Insurance	19,449	6.2%	20,239	5.5%	4.1%
Real Estate & Rental & Leasing	6,171	2.0%	7,153	2.0%	15.9%
Professional & Technical Services	22,895	7.3%	23,032	6.3%	0.6%
Management of Companies & Enterprises	5,354	1.7%	8,363	2.3%	56.2%
Administrative & Waste Services	15,313	4.9%	22,838	6.2%	49.1%
Educational Services	5,988	1.9%	7,272	2.0%	21.4%
Health Care & Social Assistance	42,144	13.4%	61,063	16.7%	44.9%
Arts, Entertainment, & Recreation	5,480	1.7%	6,336	1.7%	15.6%
Accommodation & Food Services	25,816	8.2%	34,371	9.4%	33.1%
Other Services, except Public Administration	15,742	5.0%	12,337	3.4%	-21.6%
Federal Government	5,191	1.7%	4,792	1.3%	-7.7%
State Government	494	0.2%	618	0.2%	25.1%
Local Government	40,925	13.0%	42,015	11.5%	2.7%
Unclassified	756	0.2%	1,522	0.4%	101.3%
TOTAL (a)	313,615	100.0%	366,720	100.0%	16.9%

(a) Figures may not sum to totals due to rounding.
Source: Quarterly Census of Employment and Wages (QCEW), US Bureau of Labor Statistics, 2010, 2017; BAE, 2018.

TOP FIVE EMPLOYMENT INDUSTRIES

CONTRA COSTA COUNTY	UNINCORPORATED CONTRA COSTA COUNTY
1. Health Care and Social Assistance	1. Construction
2. Government	2. Manufacturing
3. Retail Trade	3. Health Care and Social Assistance
4. Accommodation and Food Services	4. Government
5. Construction	5. Transportation, Warehousing, and Utilities

Sources: Quarterly Census of Employment and Wages (QCEW), US Bureau of Labor Statistics, 2017; U.S. Census Longitudinal Employer-Household Dynamics via OnTheMap, 2015; BAE, 2018.

PROJECTED JOB GROWTH BY INDUSTRY GROUP

JOBS	2020	2040	NET CHANGE	PERCENT CHANGE
UNINCORPORATED AREA (a)	38,460	41,085	2,625	6.8%
Agriculture and Natural Resources	220	215	-5	-2.3%
Financial and Professional Service	9,810	9,040	-770	-7.8%
Health, Educational, and Recreational	10,465	12,310	1,845	17.6%
Manufacturing, Wholesale, and Transportation	4,410	4,765	355	8.0%
Information, Government, and Construction	9,545	10,475	930	9.7%
Retail	4,010	4,275	265	6.6%

CONTRA COSTA COUNTY (a)	414,290	498,115	83,825	20.2%
Agriculture and Natural Resources	1,450	1,440	-10	-0.7%
Financial and Professional Service	104,010	123,565	19,555	18.8%
Health, Educational, and Recreational	126,070	168,830	42,760	33.9%
Manufacturing, Wholesale, and Transportation	37,580	39,960	2,380	6.3%
Information, Government, and Construction	99,195	114,135	14,940	15.1%
Retail	45,985	50,180	4,195	9.1%

(a) Figures may not sum to totals due to rounding.
Sources: Association of Bay Area Governments, Plan Bay Area Projections 2017 by Jurisdiction; BAE, 2018.



ECONOMIC DEVELOPMENT

QUESTIONS:

Within your community, is there an adequate range of employment opportunities? If not, what employment opportunities are missing?

As the County attempts to revitalize older industrial areas, what types of businesses should the County aim to attract? Are there types that should be discouraged?

Are there particular areas in your community that need economic revitalization?

Do the businesses in your community provide the services necessary to meet your daily needs? If not, what's missing?