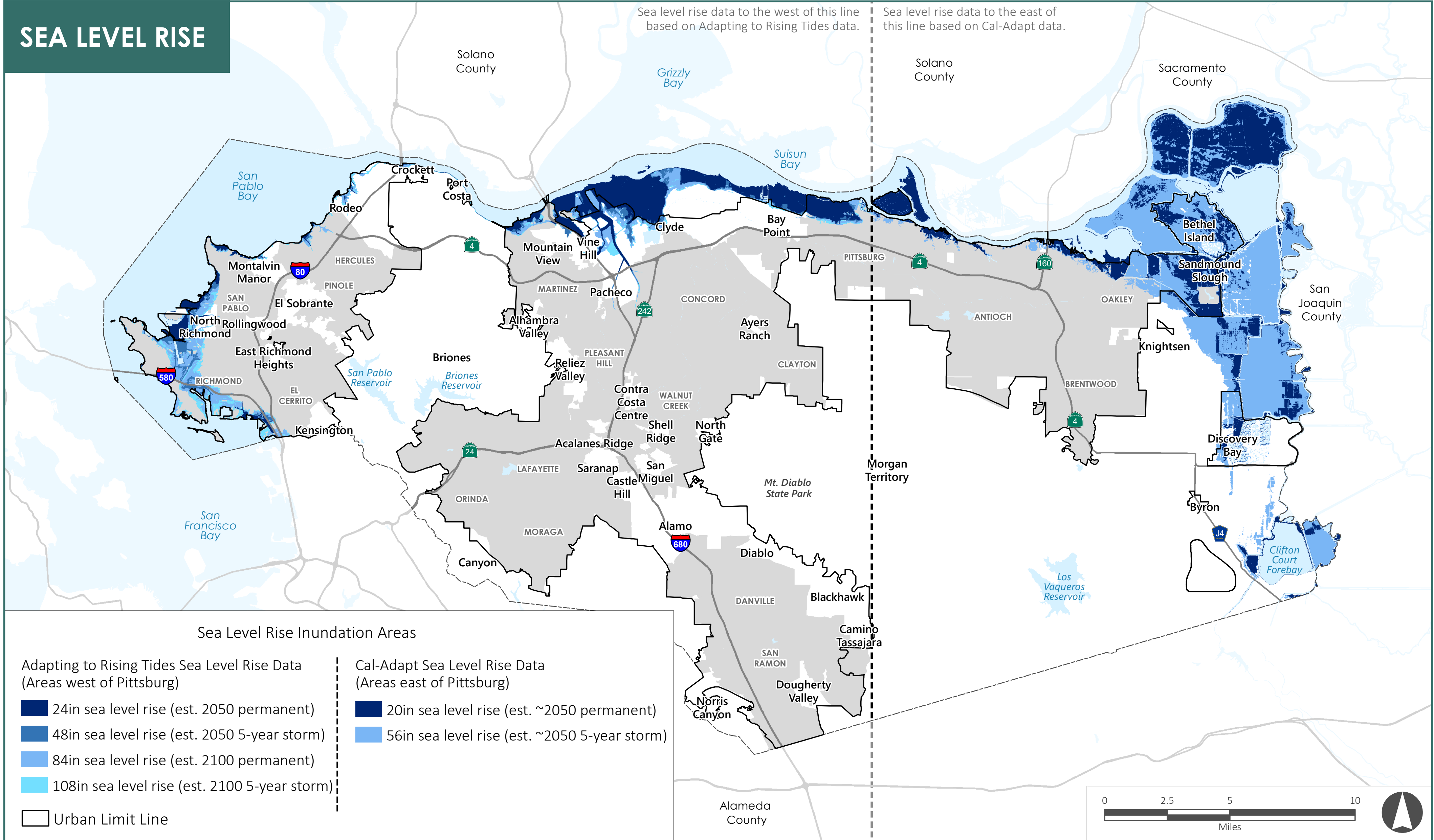
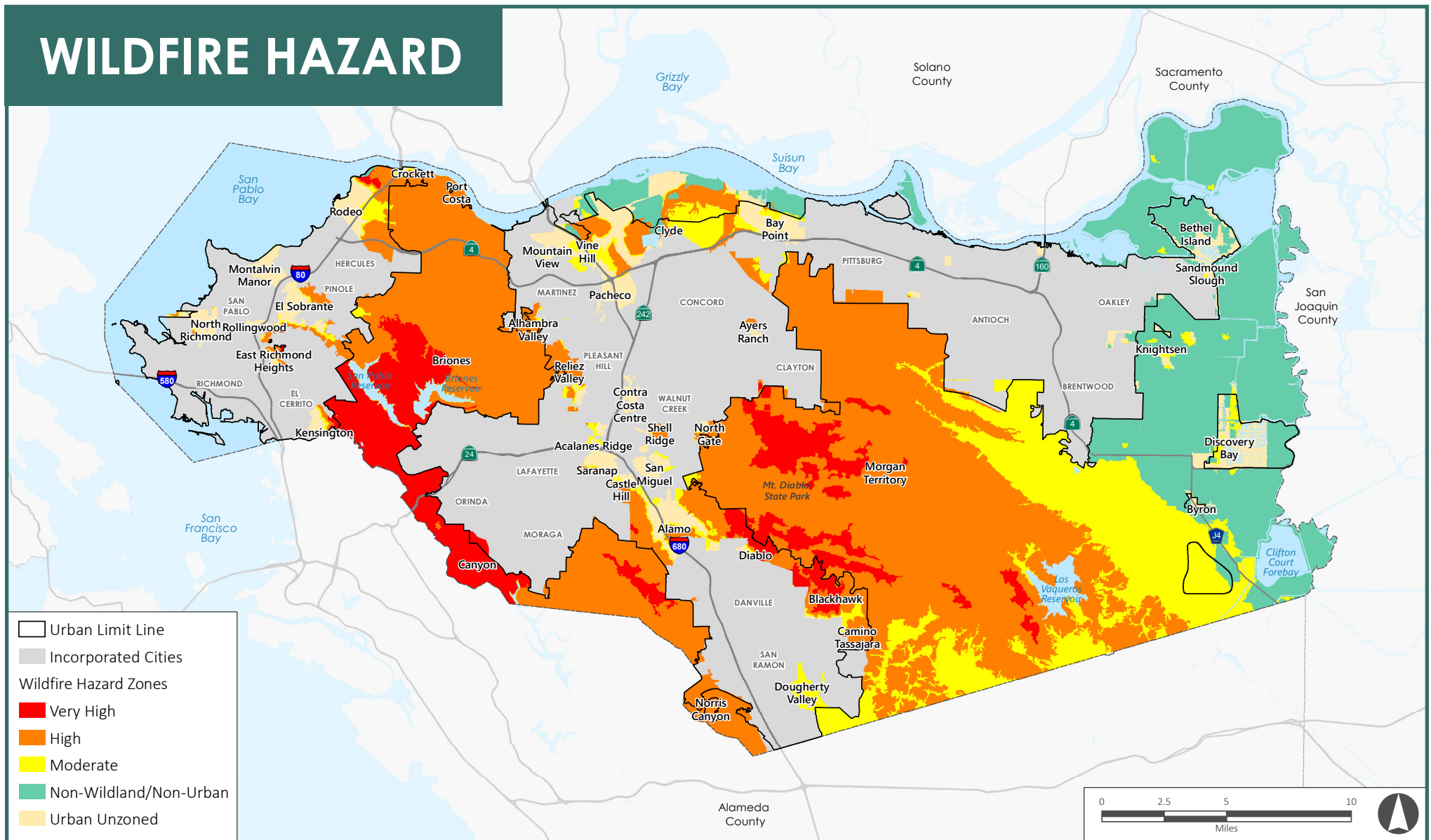
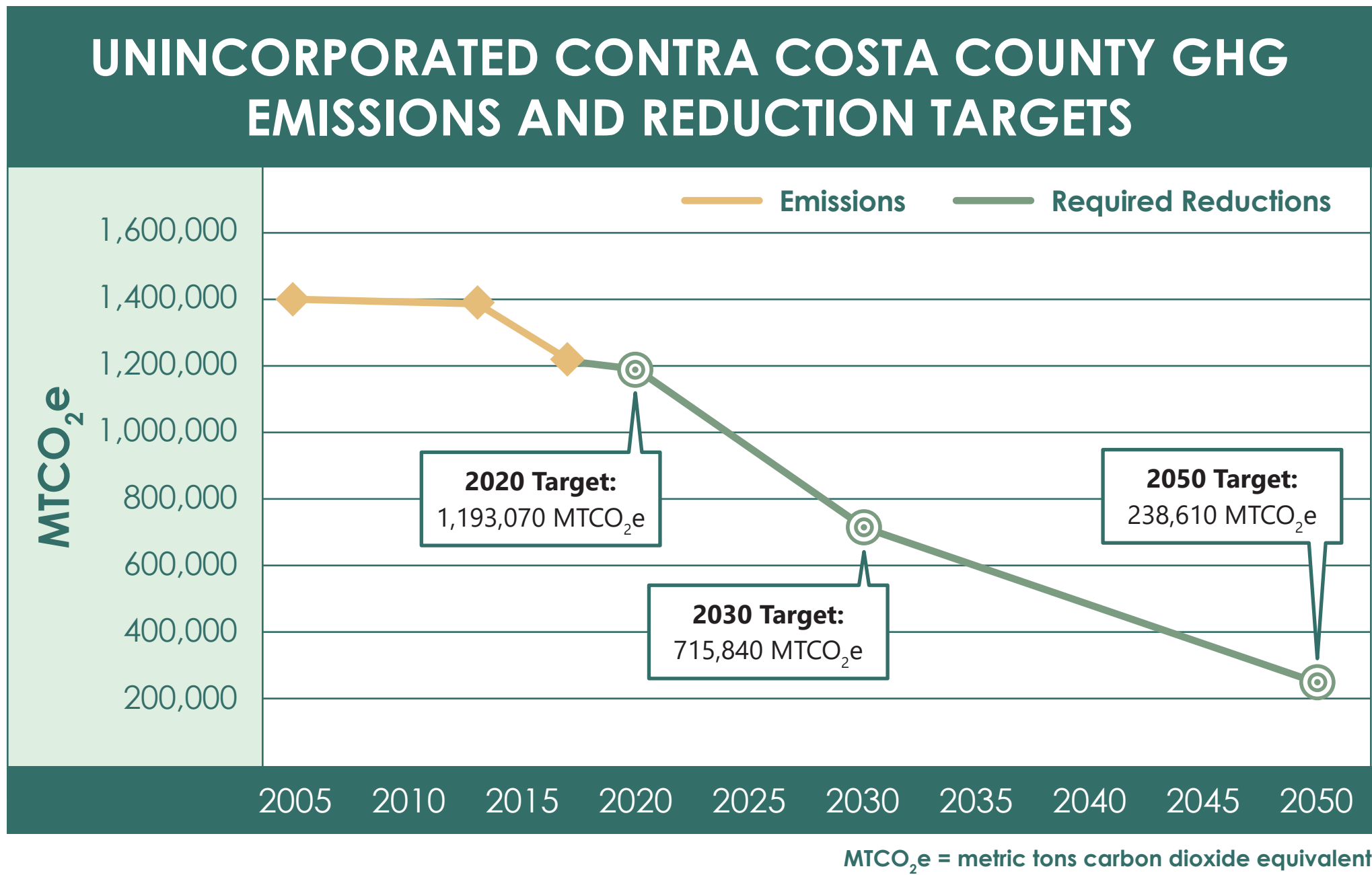
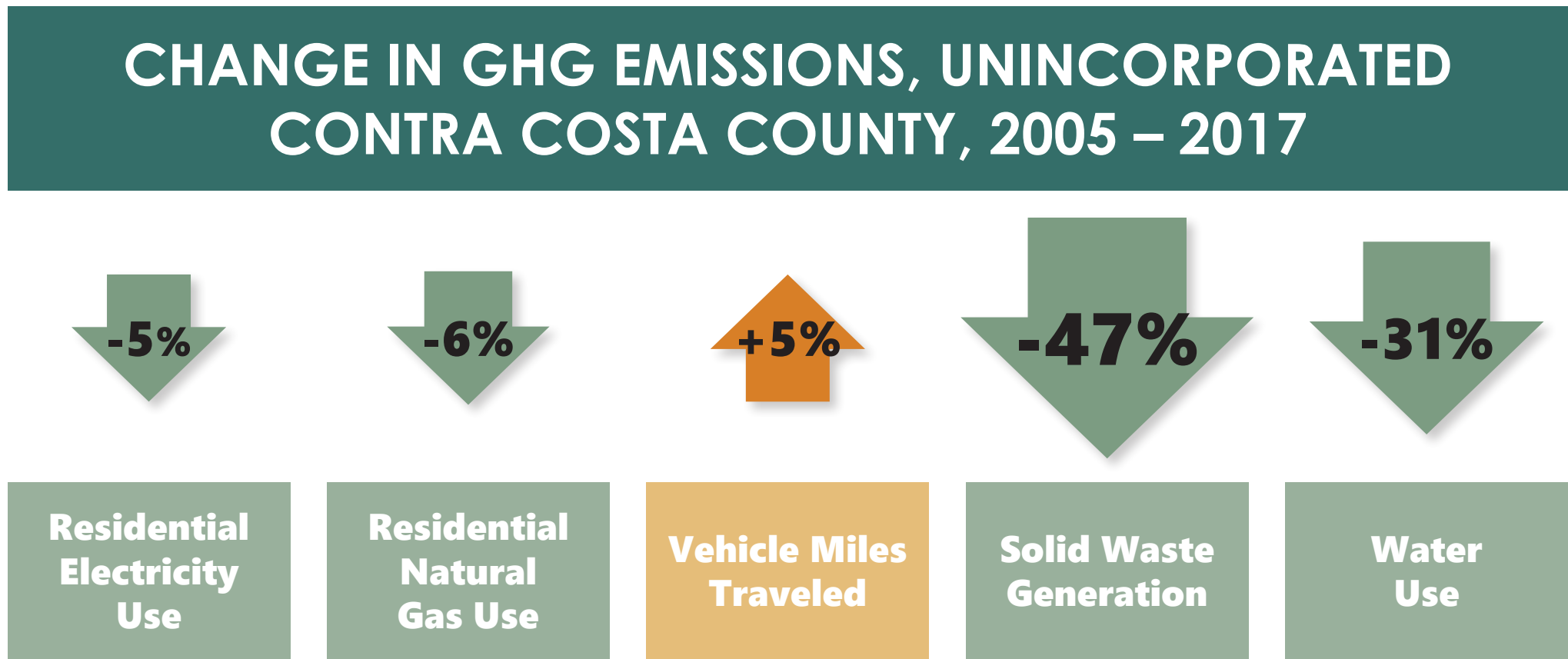
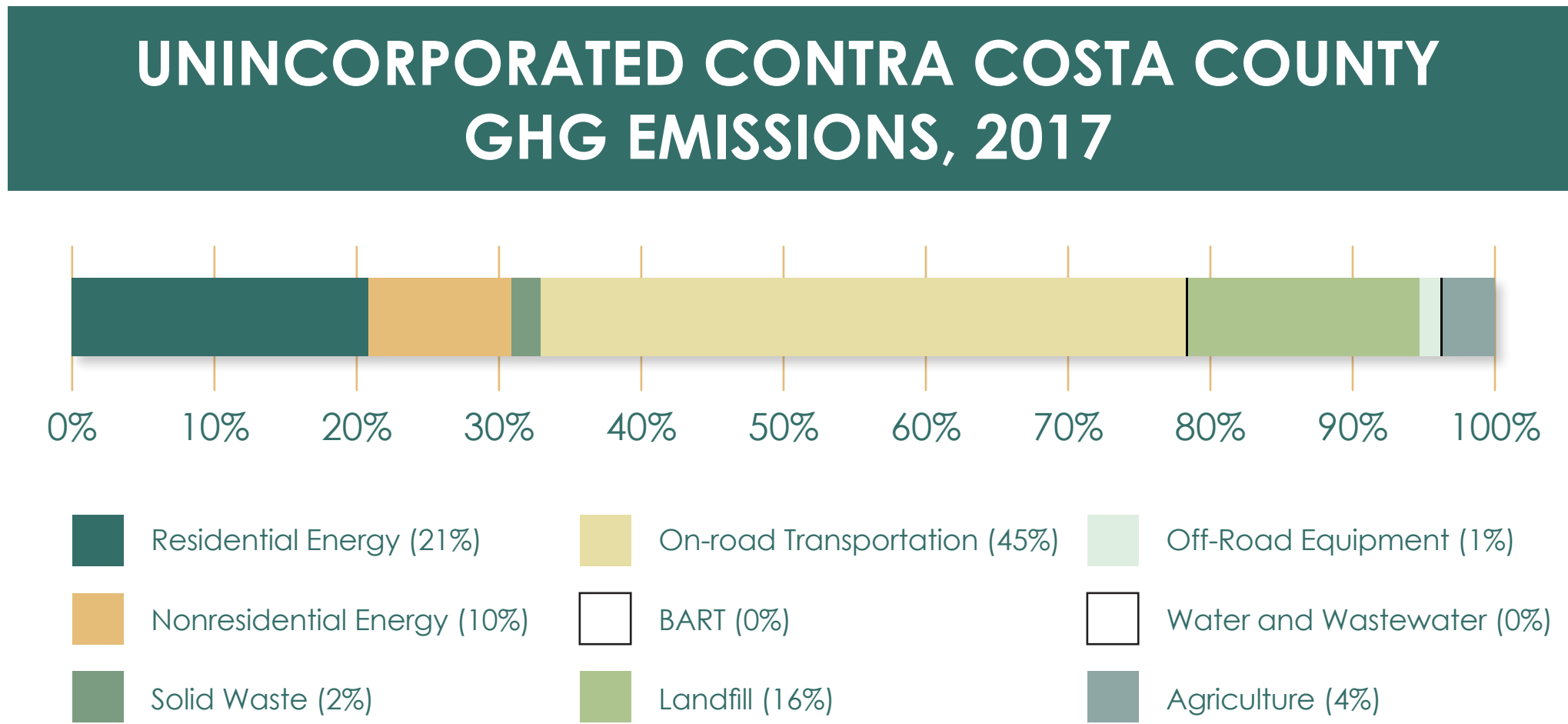




# SAFETY AND RESILIENCY



Source: Adapting to Rising Tides, 2018; Cal-Adapt, 2016; Contra Costa County, 2019; PlaceWorks, 2019.



Source: Contra Costa County, 2019; CalFIRE, 2007, 2009; PlaceWorks, 2019.

UNINCORPORATED CONTRA COSTA COUNTY GHG EMISSIONS				
Sector	2005 MTCO <sub>2</sub> e	2013 MTCO <sub>2</sub> e	2017 MTCO <sub>2</sub> e	Percent change
Residential energy	274,690	258,420	252,730	-8%
Nonresidential energy	118,740	125,350	122,040 *	3%
Solid waste	48,450	26,540	25,570	-47%
Landfill	193,950	196,500	197,710	2%
On-road transportation	628,200	651,130	550,490 †	-12%
BART	2,300	2,680	1,350	-41%
Off-road equipment	71,880	66,230	17,580	-76%
Water and wastewater	8,080	7,400	5,690	-30%
Agriculture	57,320	58,200	46,180	-19%
<b>Total</b>	<b>1,403,610</b>	<b>1,392,450</b>	<b>1,219,340</b>	<b>-13%</b>
* 2013 data used as a proxy.				
† Subject to potential revisions as new data become available.				





# SAFETY AND RESILIENCY

## QUESTIONS:

Is your community prepared to deal with the impacts of a natural disaster, such as an earthquake or fire? If not, what could be improved?

Is your community adequately served by emergency services such as fire protection, law enforcement, and ambulances?

What is your greatest concern about how climate change might impact your community?

What are the most important things the County should do to protect against climate change and disasters?

What are the most important actions the County should take to reduce greenhouse gas emissions?