



ENVISION CONTRA COSTA 2040

Bay Point and Clyde Community Meeting: Issues and Vision

Ambrose Recreation and Park District
3105 Willow Pass Road, Bay Point, CA 94565
Thursday, April 18th, 2019

A community meeting for Bay Point and Clyde residents as part of Envision Contra Costa 2040 took place on Thursday, April 18, 2019, from 6:30 to 8:30 PM at the Ambrose Recreation and Park District community center. The purpose of this workshop was to begin establishing a vision for the future of each community and identify issues the General Plan should address to achieve that vision. County staff and consultants facilitated the workshop and approximately 20 residents attended and participated. After a presentation about the Envision Contra Costa 2040 process, community members worked in small groups discussing questions regarding the future of these communities. Responses to each question are summarized below. Detailed notes from the small group discussions, as well as comment cards submitted at the workshop, are attached to this summary.

Question 1: What do you like most about Bay Point and Clyde? What would you like to see supported, preserved, or enhanced as part of this planning effort?

- Small-town ambiance in both communities and the quietness in Clyde.
- Convenient access to BART and several freeways.
- Central location within the Bay Area.
- The marina.
- Relatively affordable housing.
- Enhance coordination among various community services.
- Enhance family-friendly amenities.
- Enhance diversity of local businesses.

Question 2: What are the challenges facing Bay Point and Clyde? What would you like to see changed in Bay Point and Clyde in order to make them better places to live and work?

- Address illegal dumping.
- Address odors in Clyde.
- Address refinery impacts.
- Address impacts related to anticipated sea level rise.
- Increase the number of electric vehicle (EV) charging stations.
- Improve pedestrian and community safety, including through better lighting.
- Protect existing residents from housing displacement and provide more services for homeless people.
- Support and encourage jobs for local residents within the community.
- Provide a more comprehensive transportation network.
- Improve code enforcement.

Question 3: Do you think changes are needed to the planned land uses shown in the General Plan land use and zoning maps? If so, what changes are needed?

- Rezone vacant heavy-industrial lot in Clyde, west of Port Chicago Highway, for parks or open space.
- Implement the plan for water recreation and local businesses on Bay Point waterfront.
- Plan for more retail along Willow Pass Road.



ENVISION CONTRA COSTA 2040

COMMENT CARD

Date: 4-18-19

Please fill out this form if you have any comments about the General Plan, Zoning Code, and/or Climate Action Plan Updates. (Name and contact information are optional).

Name: Nazaria Preciado

Affiliation: Family Justice Center

Address: 203 El Dorado Dr. Pittsburg, CA 94565

Phone / Email: NAZARIA@COCOFAMILYJUSTICE.ORG 925-289-6855

Comments (Use back if necessary): The community and county need to work together on prevention initiatives to prevent interpersonal violence and focus on family wellness. We need to build strong partnerships with the community and organizations to focus on the family as a whole. We need to ensure that there are resources for interpersonal violence victims. We need to have a system in place for crisis support, long term safety and community building.



The future of my community is...

Bay Point

Transportation Hub*

Affordable Housing **

Youth Home *

Shelter

Stop the Dumping *

Less Contamination Sites **

Address Homelessness ***

New Jobs for (Constructions)
sites

Residents (ex fellows)

Parking enforcement

No 6' fencing at corner houses

RESOURCES for victims of Interpersonal violence

Noise reduction from
residents and businesses

High School

Clyde

Keep As Is

Public access to land
surrounding town

Surrounding infrastructure

Q1

Bay Point

- Great place to raise a family
- The river! It's a treasure!

→ Kids can safely ride bikes

Kids / families know each other.

Need a high school here.

• MDUSD - not contiguous
w/ everything else - doesn't make
sense.

• Issues w/ transportation to
Pittsburg HS.

↑ business - esp. big box retail

- Demographically - diverse - makes it unique.

- Community services (eg this SPARK Bldg)

Q1

- BART Station / ease of regional transportation
 - But need more buses to BART
 - Good walking / trail network
 - But need more lighting for safety.
- Services for seniors - nice senior facility here, w/ transportation to CC Café.
 - But old facility - needs upgrades.
 - Need more services for seniors, too.
 - Some seniors are homeless.
- Teen center + Bay Point Youth Academy + library homework help - on middle school campus.
 - Good resource, but can do better → ↑ funding.

Q1

- Good police officers - engaged w/ community
 - Come to Bay Point partnership Mtgs. + parades + bike rodeo.
- Supe Glover's office engaged
- Community Thanksgiving
- CA Water does a lot for community
- **The People!** ~~A~~ They participate in all Community mtgs. + volunteer.
 - Businesses help too
- 2x/yr = big garbage dump opportunity - thru Supe Glover's office.
 - Businesses help w/ outreach

Q2

Illegal dumping

Homeless - need a shelter +

Need a youth home - help homeless youth w/ hsg + services.

mental health substance abuse services
*** Need more resources!**

Q2

- More services/outreach for family violence/
reduce stigma.
 - Prevention interventions
- People lack health coverage
 - Roto-care (mobile clinic) is good →
need more.
- More businesses/stores
 - Fruit Market / Safeway = great assets
 - Need a Food Co / Winco store w/ lower
cost food ~~for~~
 - Super K-type store
 - Many lack transportation to (e) options
- Need more direct bus routes - too circuitous
now.
- (Asset) - livestock here.
- Need to build partnerships among organization
so patients/clients can use them more
efficiently.

Q2

- Water Co is good to community, but it's very expensive, esp. compared to neighboring communities.
- Do more community workshops to educate & talk to community re a variety of issues.
- 2 types of resident: involved old-timer + non-connected new people. Need to connect.
 - Old Bay Point
vs
Across Hwy 4. → they don't integrate.
- Asset: Churches.
- Increase Code enforcement. & Follow through
 - Esp. to combat illegal dumping.
- Violence
- Road rage on Hwy 4
- Gangs

Q2

- Access to ~~media~~ mental health - need to increase
 - Plus need more resources / \$ to help.
- Abandoned cars

Q3

- Vacant industrial: Δ to business + residential (mixed use)
- Need opportunities for good-paying jobs so people don't have to drive to SF.
- Need "inviting" street environment w/ lighting so feel safe at night.

Question 1

Preserves

- Small town ambiance (BP/C)
- Quiet (C)
- Hub for shopping (BP)
- Proximity to BART (BP/C) x 4
- Easy Access to almost anywhere. Centrally located (BP)
- Good Public Transit (BP)
- Good Police Fire
- Natural Resources like Delta (BP)
- Relatively Affordable Housing (BP)
- Like trails

Question 2

- Too many abandoned cars (BP)
- Too much commercial vehicles in residential (BP)
- Drugs (BP)
- No noise ordinance (BP)
- Garbage in roadway / Illegal Dumping (BP)
(Blight)
- Standing water in roadway Port Chicago (BP) (C)
Poor drainage. Mosquito abatement
- High car use rate (BP)
- Lack of access to open space surrounding Clyde
- Not enough / complete sidewalks (BP)
- Not enough street lighting (BP)
- Traffic control PLH and Bates (C)
- Do not like HI zone in Clyde
- No public trash cans. Causes littering (BP) *Clash Eng Dump*
- Housing without jobs. Too much traffic. (BP)
XZ Job/Housing Balance

Q2. cont.

- ~~Not enough~~ ^{Cameras} Not enough recycling services in Clyde
Service is not every week.
- Smell from oil refineries
- Zoning / GP does not allow Homeless shelters
- Zoning / GP are too restrictive / Burdening to businesses.
 - Costs (Drainage, Bio-retention, Application fees,)
especially for small businesses
- No ^{not enough} native plants on trails (BP)
- We want more
- Graffiti on trails (BP)
- Major dumpsite at - PLH & Driftwood
 - Pullman & Snigun
- County Managed drainage ditches are not maintained (obstructed, not clean)
- County Parks in Clyde not maintained
- No Banks
- Food desert
- No major retail
- School system is failing; Lack of child care

- Less contamination spots
 - ↳ evacuation
 - ↳ industrial safety
- Odors from refinery (CLYDE) (CL)
- Walk to BART (CL) + Windy
- Quiet (LL) - Views and cons (LL) Gangs homeless
- pedestrian & community safety
 - ↳ Anuta Park, children can't use
- + BART station (positive) → extend BART
- + Enjoys Marina, kid-friendly
- Hard to get out of driveway due to traffic
- Infrastructure improvement near Port Chicago. (CL)
- * Problem w/ metering lights, ~~meter~~ keep metering lights on
- ↳ people trying to cut traffic
- + cameras on freeway (positive)
- more diverse businesses

- Enforce parking laws
- 6' fences = safety issues for drivers
- Code enforcement
- Refinery issues:
 - Stink issues
 - dangerous leaks
 - Lack of trust
- Horrible water quality, stinks, expensive repairing
- Illegal businesses, ~~overflow~~ of cars in residential zone cuts off if don't pay quickly
- Slow response from Sheriff
- Community participation for waterfront development
- What is heavy industrial site across from Clyde?
- Affordability of Housing
- protection from Displacement (Due to Growth)
- Address traffic issues in waterfront Dev.
- Jobs/Housing balance
- Better public transit
- Ensuring Gov't coordination for impact

- Local jobs for Local residents

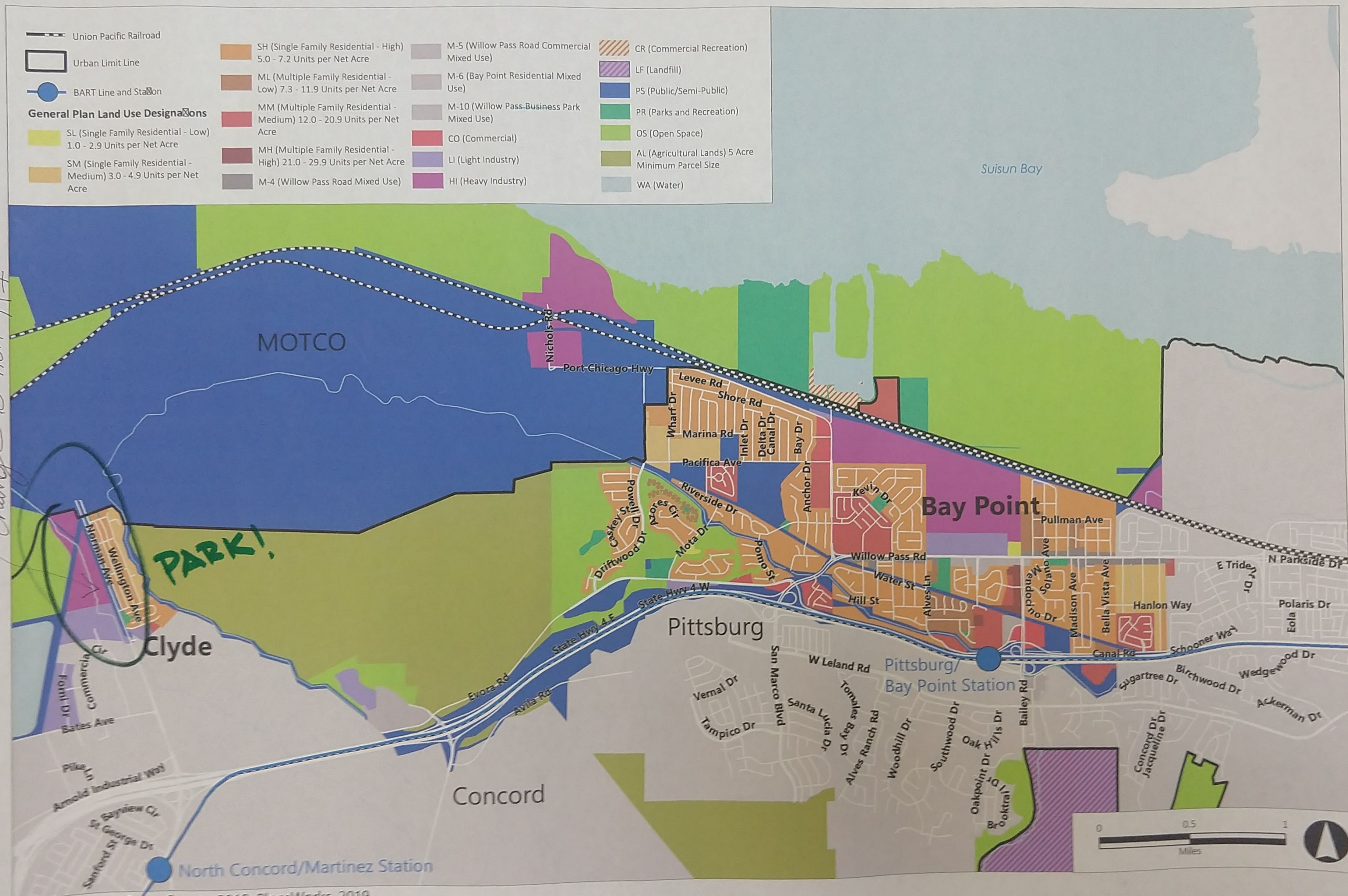
Table 5
4/18

↳ incentives for businesses to hire local. Living wages!

- Opening of creek & watershed improvements **CL**
- Change heavy-industrial Area to Park **CL**
- Poor Air Quality due to Refinery **BP+CL**
+ Landfill
- Engage local leaders + Community Groups
- **Community Leadership Group**
bike
walk
transit
- Homelessness is an issue
- Comprehensive transportation network

BAY POINT AND CLYDE COMMUNITY MEETING

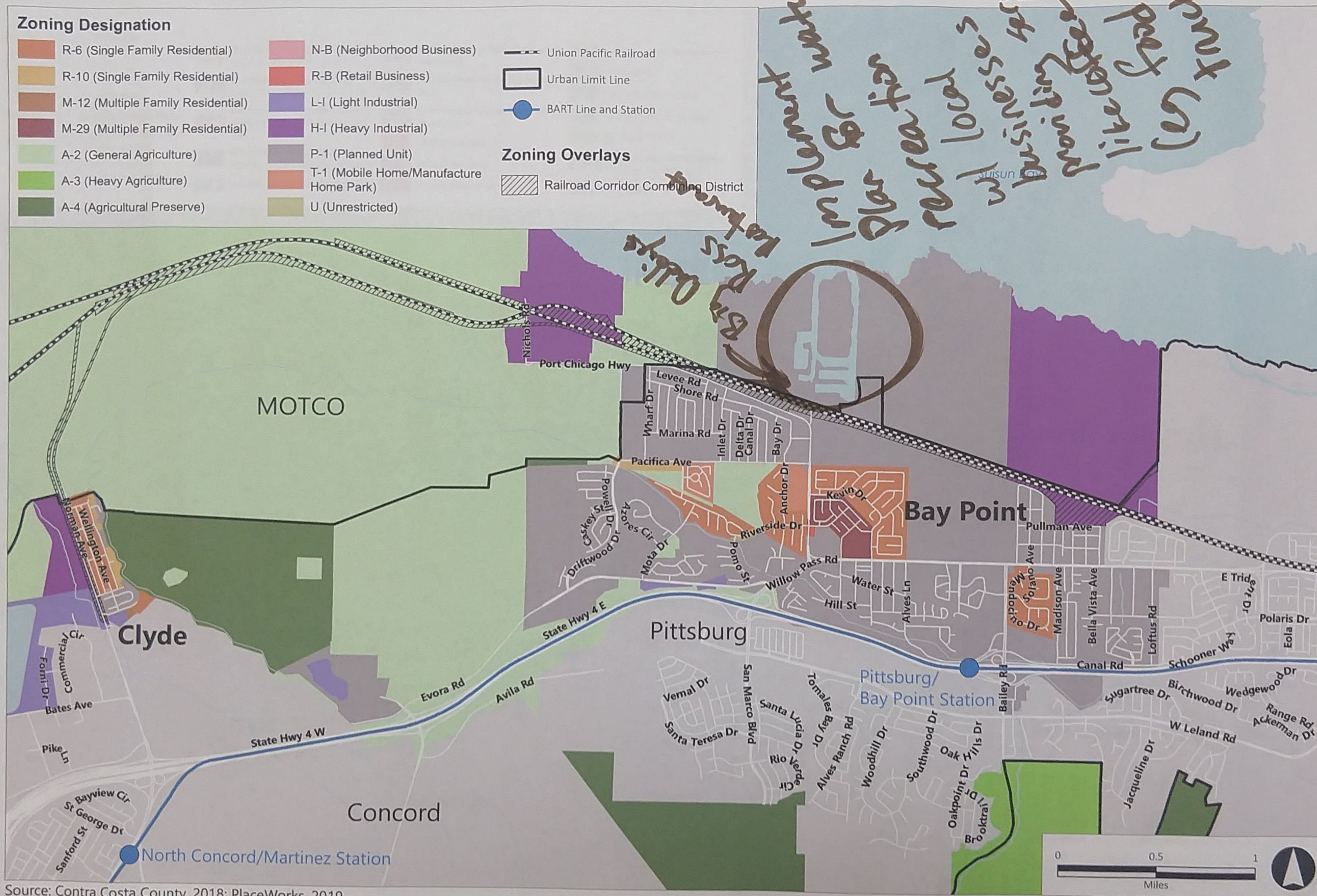
who owns the trail?
change to non H/I



Source: Contra Costa County, 2018; PlaceWorks, 2019.

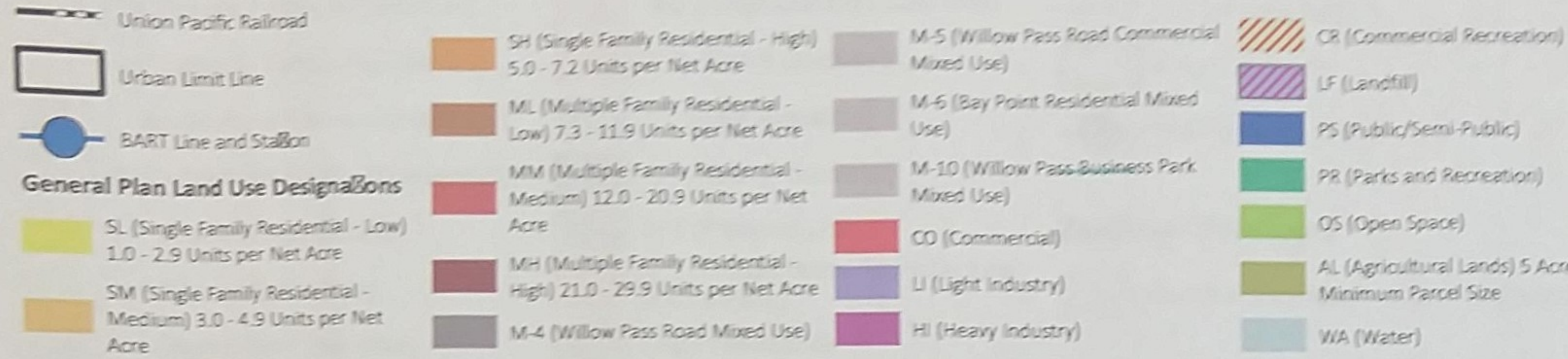
General Plan Land Use Designations for Bay Point and Clyde

BAY POINT AND CLYDE COMMUNITY MEETING

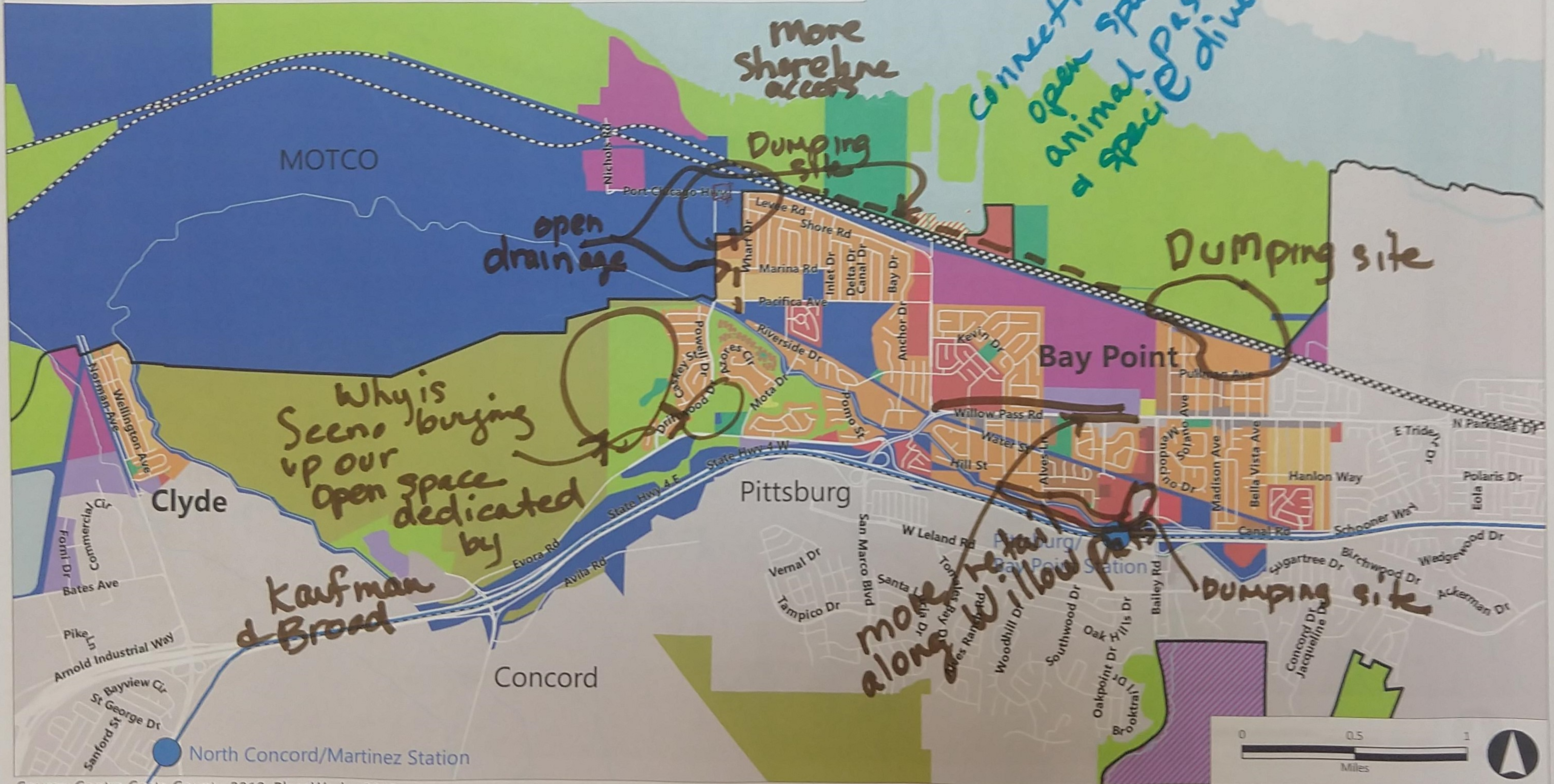


Source: Contra Costa County, 2018; PlaceWorks, 2019.

BAY POINT AND CLYDE COMMUNITY MEETING



Sealevel rise - ~~inundate~~ inundate most of Bay Point
 connectivity of open spaces for animal passage & species diversity



Source: Contra Costa County, 2018; PlaceWorks, 2019.



ENVIION
CONTRA COSTA 2040

General Plan Land Use Designations for Bay Point and Clyde

BAY POINT AND CLYDE COMMUNITY MEETING



Source: Contra Costa County, 2018; PlaceWorks, 2019.