

ENVISION
CONTRA COSTA 2040

Climate Action Plan Update

Community Meetings | September/October 2019

Why develop a Climate Action Plan?



Sanchez would be determined at a separate trial. ... being the same as for cars or any other type of vehicle. ... pol's Singapore complex, led to the arrest of 582 suspects ... ment was ratified in 1901. *Chronicle News Service*

GLOBAL POVERTY

U.N.: Climate hurting work to end hunger

By Edith M. Lederer

UNITED NATIONS — Hunger is growing and the world is not on track to end extreme poverty by 2030 and meet other U.N. goals, mainly because progress is being undermined by the impact of climate change and increasing inequality, a U.N. report said Tuesday.

The report on progress toward achieving the 17 U.N. goals notes achievements in some areas, including a 49% fall in child mortality between ...

He said at a news conference the most urgent area for action is climate change, which "may impact the progress made over the last several decades" in reducing poverty and improving life for millions of people around the world.

According to the report, biodiversity loss is happening at an accelerated rate, and "the risk of species extinction has worsened by almost 10 percent over the last 25 years." Global temperatures have risen, ocean ...



Somali women fleeing drought line up in May to receive food at a camp outside the capital, Mogadishu. *Fahm Abd Warsameh / Associated Press*



Greenhouse Gas Reduction Goals

State goals:

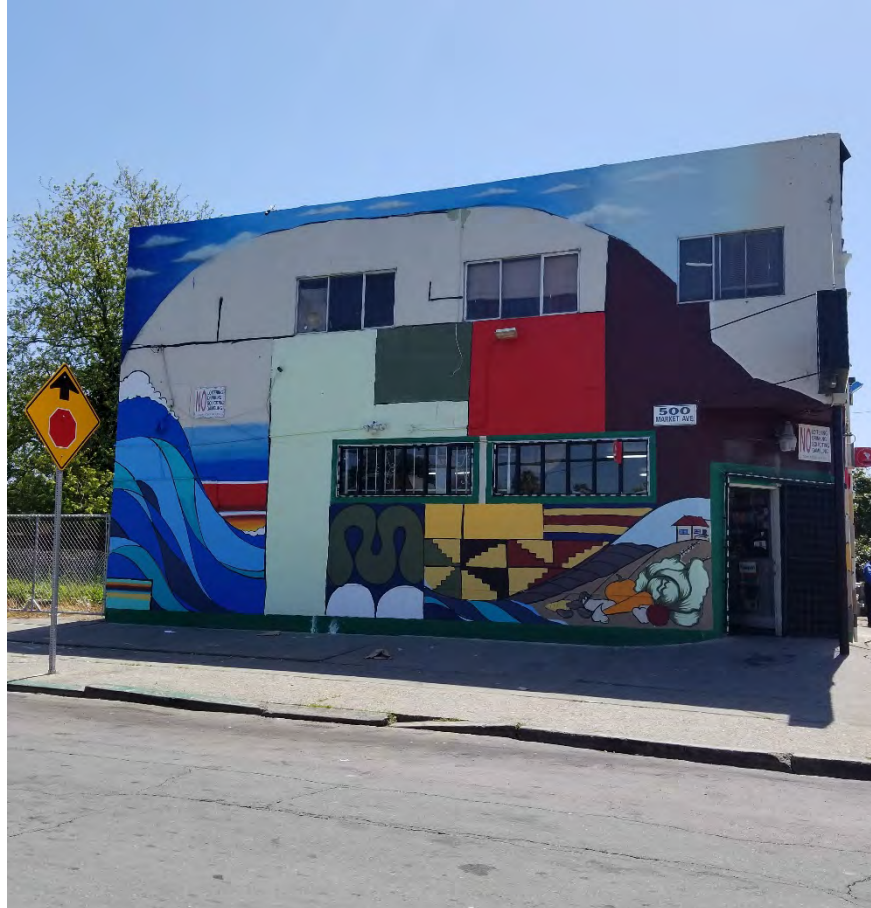
- » 80% below 1990 levels by 2050.
- » Net climate neutral by 2045.



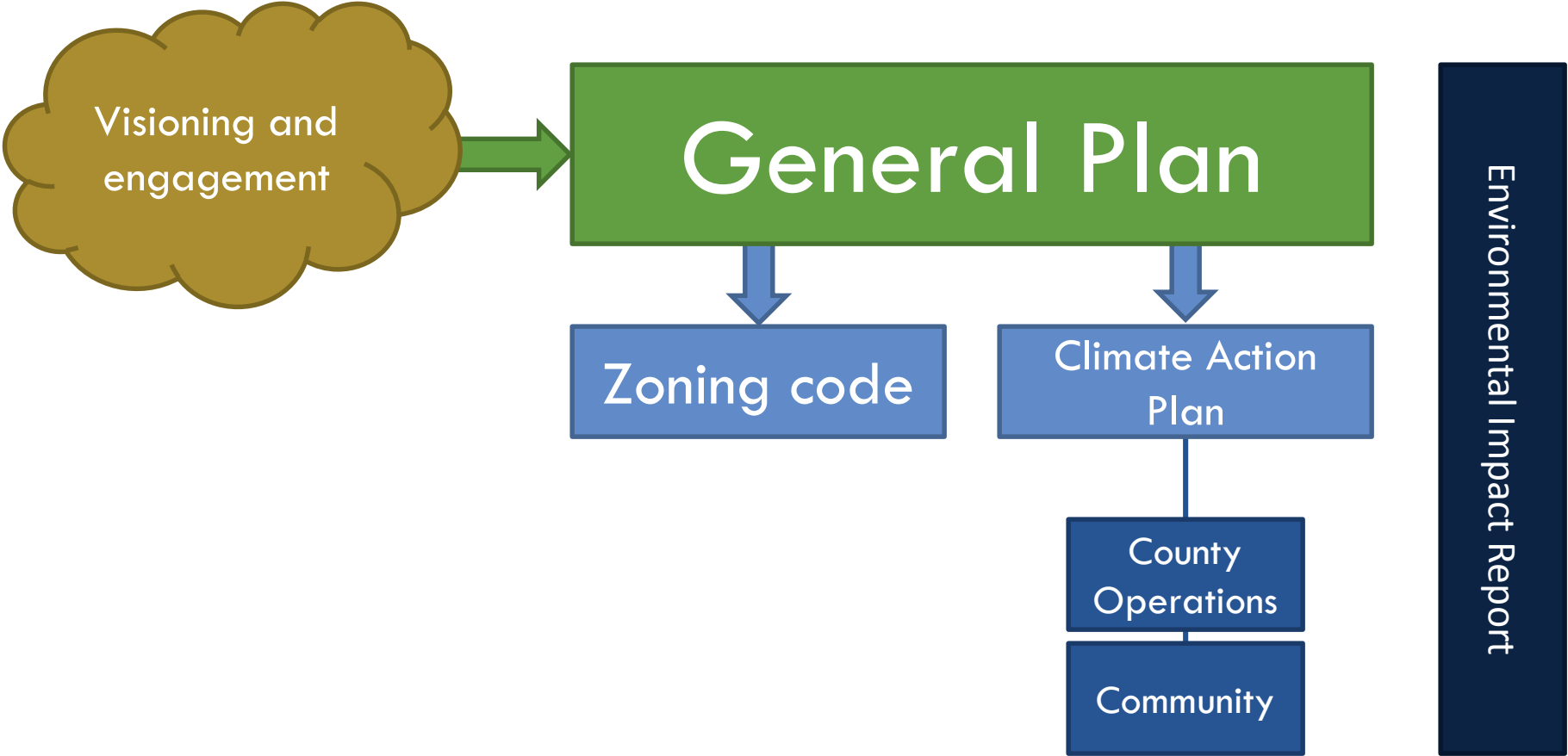
Greenhouse Gas Reduction Goals

Existing **County** goals
(2015 CAP):

- » 15% below 2005 levels by 2020 (1990 equivalent).
- » 50% below the 2020 target by 2035.



Envision Contra Costa



Climate Action Plan Update Guiding Principles



Ambitious



Inclusive



Fair



Comprehensive
and integrated



Relevant



Actionable



Evidence-
based



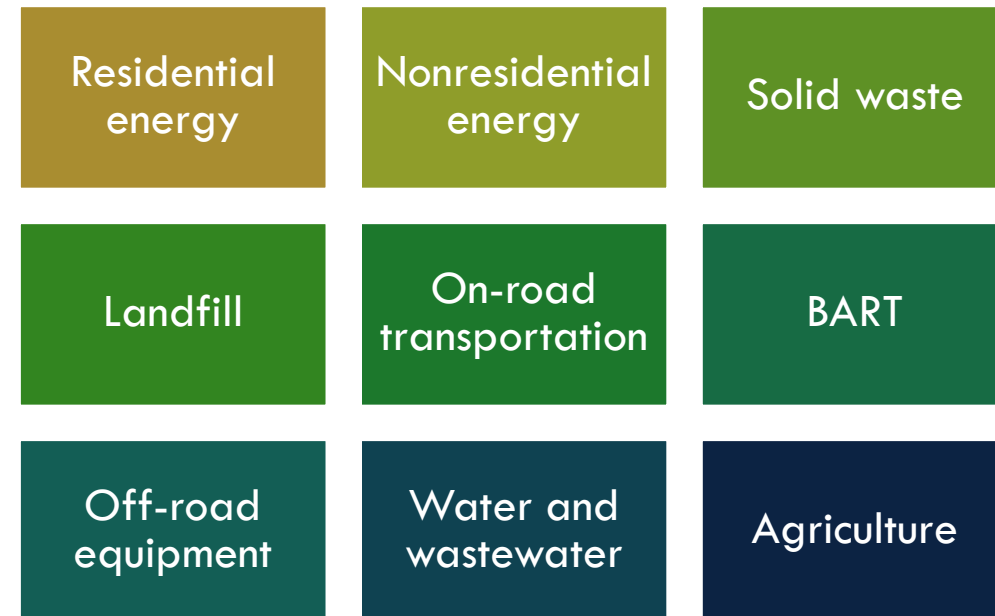
Transparent
and verifiable

Image from UN Habitat Guiding Principles for Climate Action Planning

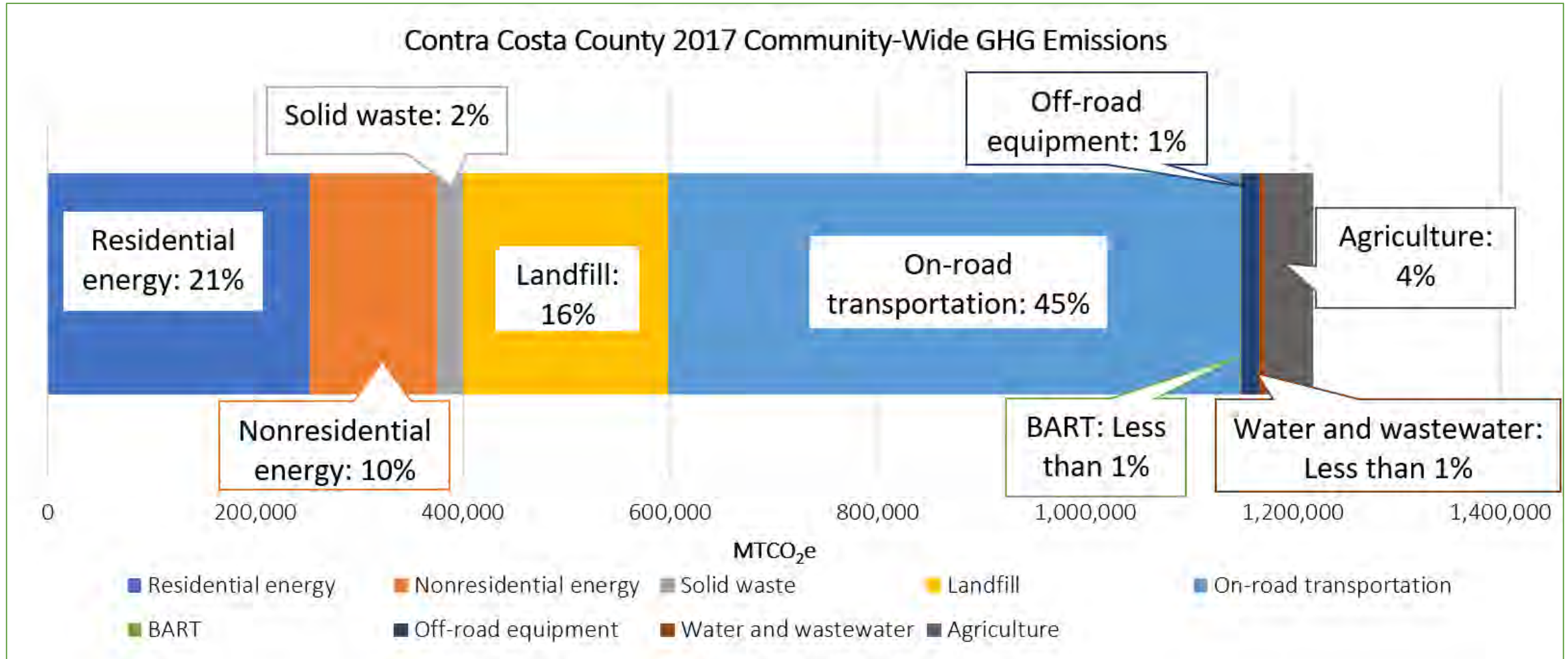
How are we doing?

Community Greenhouse Gas Inventory

- » Measurement of emissions attributed to the unincorporated county for the 2017 calendar year.
- » Identifies major sources (sectors) of emissions.



Community Inventory Results

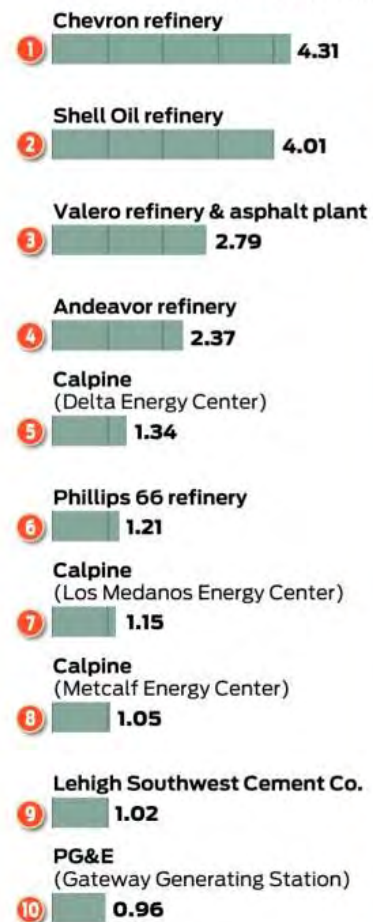


Stationary Emission Sources in Regional Context

Biggest polluters

The Bay Area facilities that produce the most greenhouse gas emissions are mainly refineries and natural gas plants. One is a cement plant.

**Estimated emissions (2016),
million metric tons of carbon
dioxide equivalent**

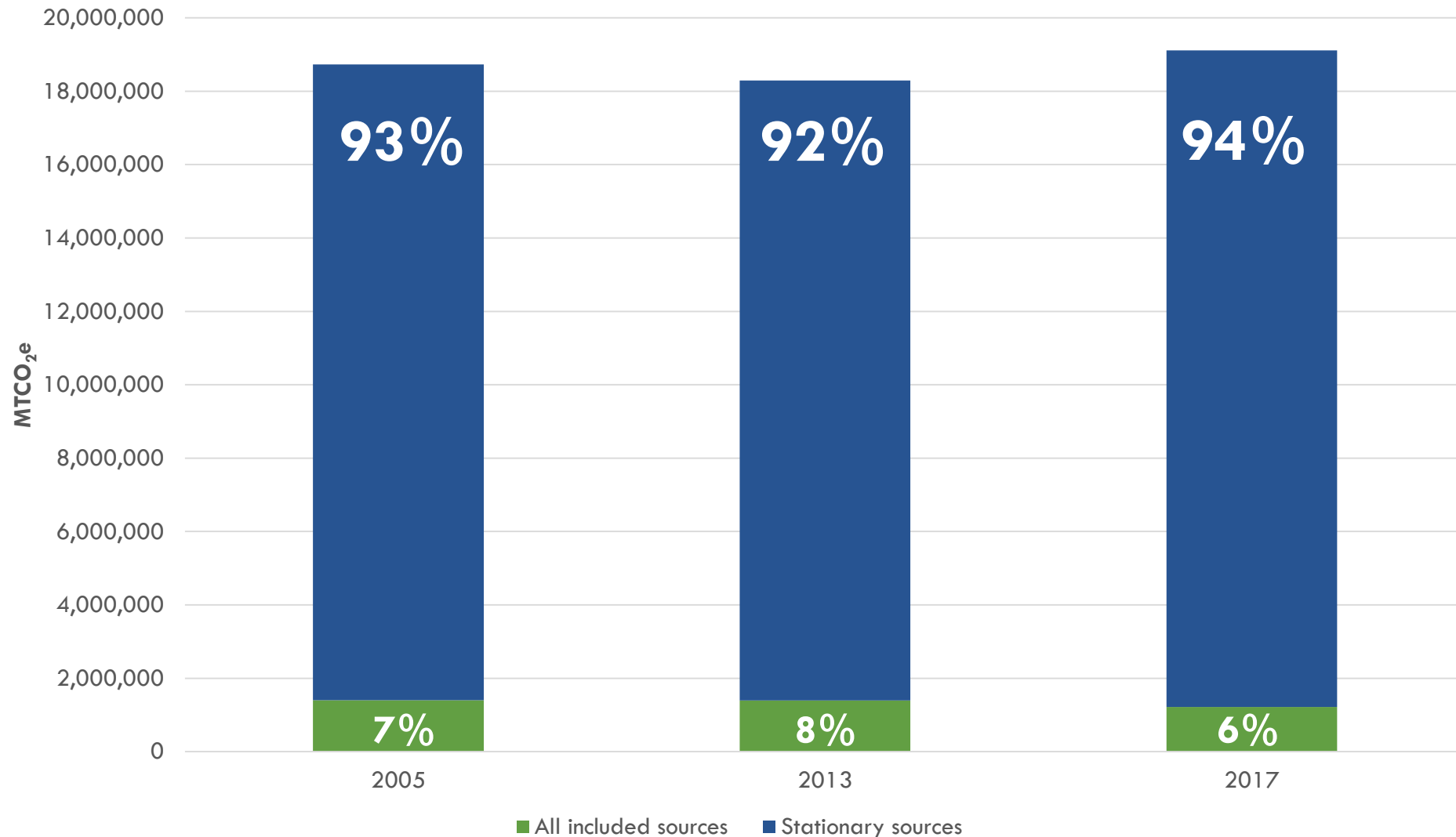


Source: California Air Resources Board



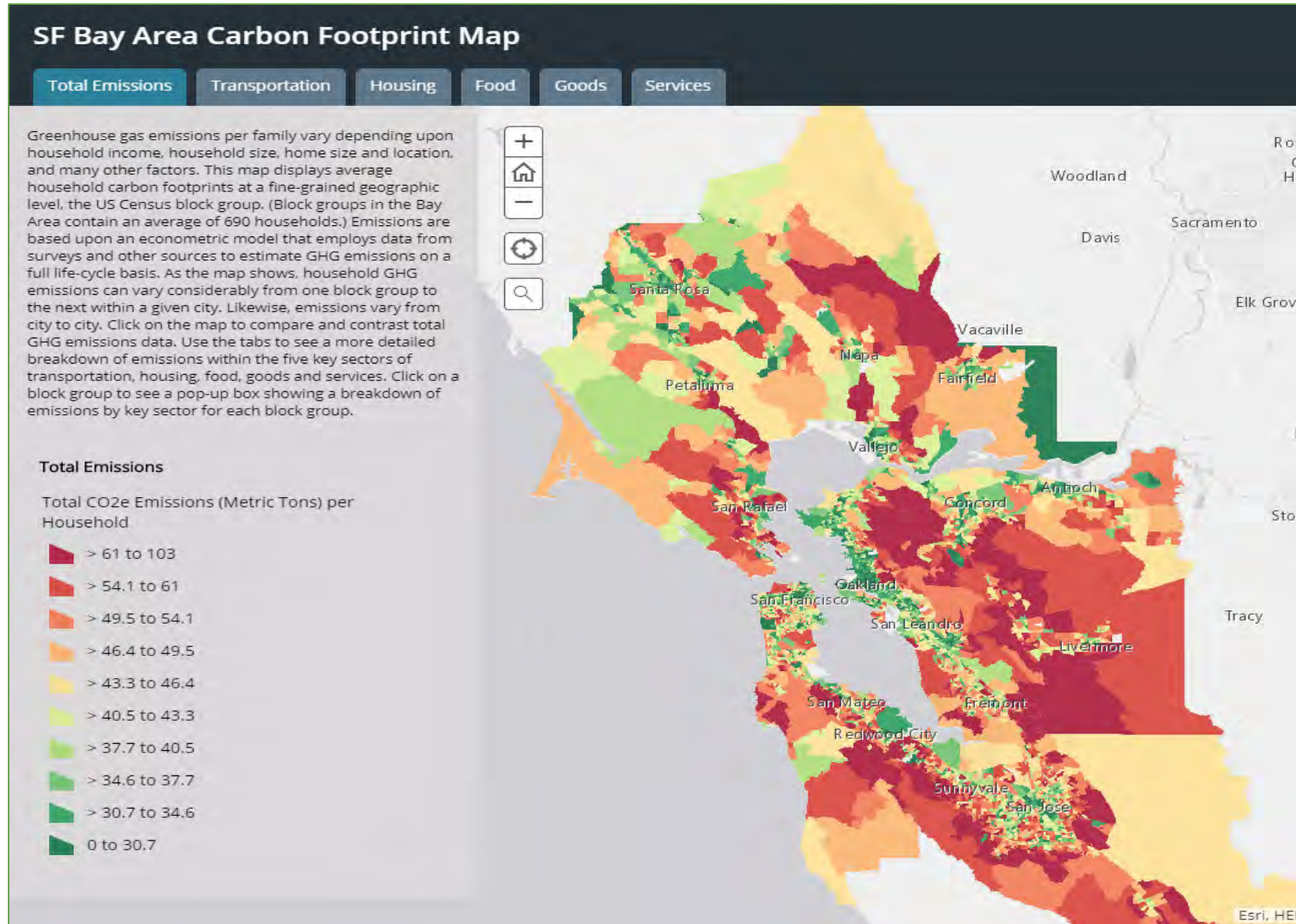
John Blanchard / The Chronicle

Emissions Inventory Including Stationary Sources



Consumption Based Inventory

Looking at greenhouse gas emissions over the life cycle of a good or service, as opposed to where emissions are generated



Source: Cool Climate Network, UC Berkeley

How do we get to lower emissions?

DRAFT Goals for 2020 CAP

- **Clean and Efficient Built Environment**
Buildings in Contra Costa County run on clean energy
- **Carbon Free Energy**
Contra Costa County uses clean energy in every sector
- **Resilient Communities**
Contra Costa County uses natural systems and open space to increase resilience to disasters and foster community health
- **No-Waste Contra Costa**
Contra Costa County generates no more solid waste than 2.25 pounds per person per day (PPD)
- **Reduce Water Use and Increase Drought Resilience**
Contra Costa County uses less water and communities are prepared for drought
- **Clean Transportation Network and Infrastructure**
Contra Costa County's transportation system facilitates walking, biking, and transit. If residents and workers are driving, they are in electric vehicles
- **Climate Equity**
The CAP will mitigate environmental factors leading to health disparities, promote safe and livable communities throughout Contra Costa County, and promote investments that improve neighborhood accessibility

Climate Action Plan Timeline

GHG inventory: January 2019

Forecast and target setting: Spring 2019

Measure development: Summer and autumn 2019

CAP development: Winter 2019/2020

CAP adoption: End of 2020 (same as General Plan)

What Do We Need?

- Do we have the right goals?
- What are actionable strategies we can take to achieve these goals?
- Take a gallery walk and give us your ideas!