



ENVISION **CONTRA COSTA 2040**

East County Community Leaders Network

June 27, 2019

Envision Contra Costa 2040



**General
Plan**



**Zoning
Code**



**Climate
Action Plan**

Environmental Impact Report

What is the General Plan?

» “Constitution” for land use

- Establishes countywide vision and supporting goals, policies, and implementation measures
- Provides consistent direction for future development
- Balances growth, conservation, and quality of life
- Documents baseline environmental conditions



Components of the General Plan

» Required Elements

- Land Use
- Transportation
- Safety
- Noise
- Open Space
- Conservation
- Housing (*adopted 2015*)

» Optional Elements in Current General Plan

- Growth Management
- Public Facilities/Services



Four Themes Throughout the New Plan

- » Economic development
- » Sustainability
- » Community health
- » Environmental justice

What is Environmental Justice?



The fair treatment of people of all races, cultures, and incomes with respect to the development, adoption, implementation, and enforcement of environmental laws, regulations, and policies.



CALIFORNIA GOVERNMENT CODE §65040.12(E)

How Does the General Plan Affect You?

- » How you and your neighbors can develop and use property
- » How easy it is to get to your job and services
- » The number and types of jobs available in your community
- » The appearance and feel of neighborhoods



How Does the General Plan Affect You?

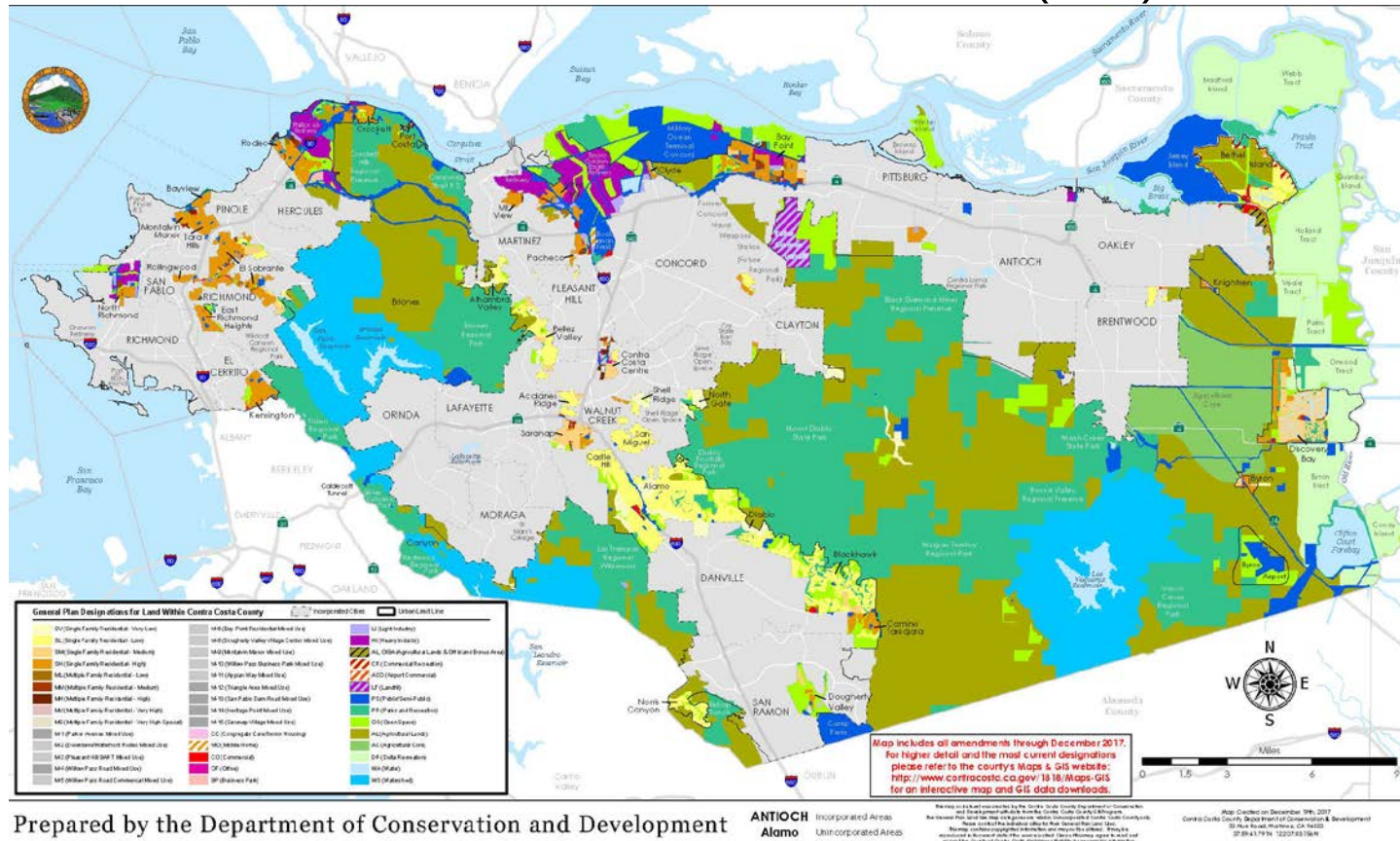
- » How roadways are designed and improved
- » Quantity and quality of parks available to you
- » Risk to you and your property from hazards
- » How cultural and natural resources around you are conserved



Land Use Map

» Development standards for each land use designation

- Maximum residential density (housing units per acre)
- Maximum nonresidential floor area ratio (FAR)



What is the Zoning Code?

- » Zoning map and districts
- » Regulations that control physical development
 - Allowed uses
 - Permitting requirements
 - Specific site development standards – setbacks, parking, lighting, signage, fences, trash enclosures, etc.
- » **General Plan vs. Zoning Code**
 - Zoning Codes implement the General Plan with specific development regulations, e.g.:
 - General Plan = “Commercial”
 - Zoning Code = “Retail Business; General Commercial”

Climate Action Plan (CAP) Update

» What is the CAP?

- Sets greenhouse gas (GHG) emissions reduction targets for the county
- Establishes a plan to reach those targets
- Implements the climate-related policy direction of the General Plan



» Why is the CAP being updated?

- State law has changed since the CAP was adopted (in 2015)
- New reduction strategies are available
- Evolving understanding of resilience and adaptation
- Opportunity to improve how the CAP is implemented
- More extensive support for greater equity
- CAP can better integrate with the new General Plan

Environmental Impact Report (EIR)

- » **California Environmental Quality Act (CEQA) requires disclosure of a project's potential impacts on the physical environment**
- » **EIR must:**
 - Disclose information about the effects the project could have on the physical environment
 - Identify mitigation measures, if necessary
 - Describe feasible alternatives to the proposed project
- » **Public review**
 - Initial 30-day scoping period – tell us what to analyze
 - Minimum 45-day review of Draft EIR – comment on the analysis

Envision Contra Costa 2040 Process

Phase	Schedule
Existing Conditions	Winter 2018 – Spring 2019
Countywide Updates & Community Profiles	Spring – Fall 2019
Draft General Plan and Zoning Code	Summer 2019 – Winter 2019/2020
Climate Action Plan	Summer 2019 – Winter 2019/2020
Environmental Impact Report and Fiscal Analysis	Fall 2019 – Summer 2020
Public Review and Adoption	Summer – Winter 2020

Opportunities for Public Involvement

- » Envisioncontracosta2040.org
- » Community Meetings
- » Open Houses
- » Focused Meetings
- » Sustainability Commission
- » County Planning Commission
- » Board of Supervisors



Opportunities for Public Involvement

» Community-Based Meetings

- Identify issues and vision at the community level
- Formulate community goals and objectives

» Open Houses

- Present project overview and identify issues and aspirations
- Generate ideas for General Plan, Zoning Code, and Climate Action Plan
- Present Draft General Plan and Draft Climate Action Plan

» Focused Meetings

- Delve into the four new themes (economic development, environmental justice, community health, and sustainability)

Online Briefing Book

Envisioncontracosta2040.org/documents

Contra Costa County Briefing Book

Envision Contra Costa 2040

Introduction & ContextLand UseMobilitySustainability & ResiliencyEconomyHousingEnvironmental JusticeCommunity Health & Well-BeingHazards & SafetyNatural & Cultural ResourcesInfrastructure & Services

Chapter 8:

COMMUNITY HEALTH AND WELL-BEING

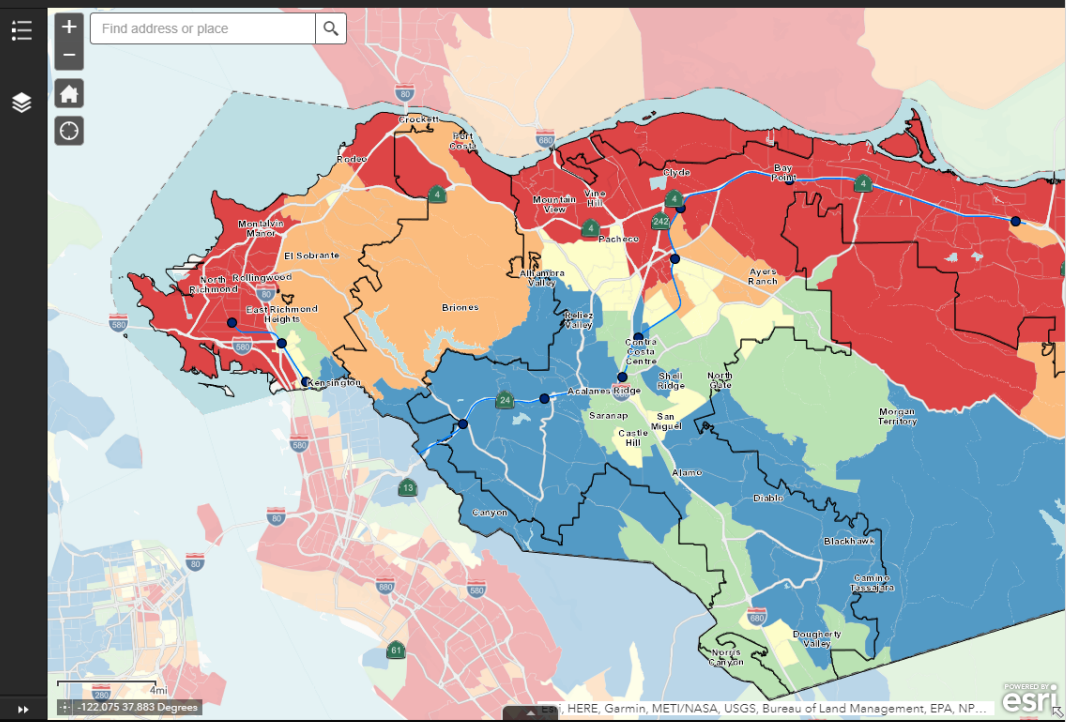
Community Health Overview

Community members, planners, and public health experts increasingly understand that policies regarding where and how communities develop have a direct effect on physical and mental health. Planning and development decisions affecting proximity of different land uses, how roadway networks connect (or don't), and access to parks, trails, and grocery stores, affect residents' day to day opportunities to eat healthy food, walk, bike, play outside, breathe clean air, and enjoy social interaction. See the [Environmental Justice](#) and [Hazards & Safety](#) sections of this Briefing Book for discussions of air quality and other risks to health. Over the long term, these factors influence a person's overall health and likelihood of developing certain diseases.

For many common health factors, residents in Contra Costa County fare better than others in California and the nation, including diabetes, heart disease, and high blood pressure. However, for asthma, obesity, and breast, colorectal, lung, and prostate cancers, rates are higher in Contra Costa than in the rest of California, and in some cases, the nation. The map to the right highlights the locations in the county where asthma rates are highest – mainly, west of Interstate 80 and throughout the northern portion of the county along the Highway 4 corridor and shoreline.

In 2018, Contra Costa County ranked #13 out of the 58 counties in California for what's called the "crude death rate," which accounts for the number of deaths from all causes per 1,000 people in the

Asthma Rates



Find address or place

4mi

122.075 37.883 Degrees

HERE, Garmin, METI/NASA, USGS, Bureau of Land Management, EPA, NP...

esri

Type here to search

10:08 AM 4/11/2019

Online Participation

Envisioncontracosta2040.org/online-engagement



Envision Contra Costa 2040

Home

Overview ▾

Events ▾

Documents

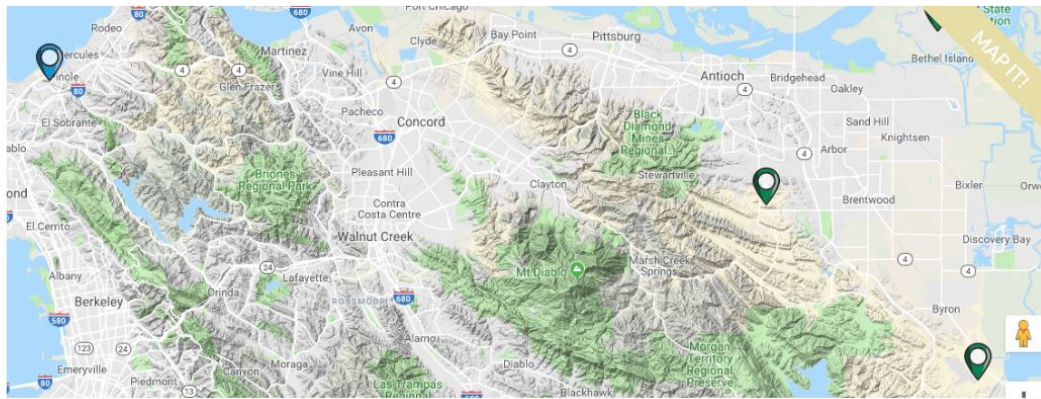
Participate Online

Contact Us

Additional Resources

Online Engagement

What are your ideas?



Sign up for our mailing list!

Enter your email address:

Sign up

ENVISION CONTRA COSTA 2040

Questions?