

# How to Use the General Plan

**Goal Numbering:** Each goal number starts with the element acronym and is followed by the number of the goal (e.g., SC-8 = Stronger Communities Element, eighth goal).

**Goals:** A goal describes the general desired result sought by the County. Each goal has one or more policies and/or actions associated with the goal.

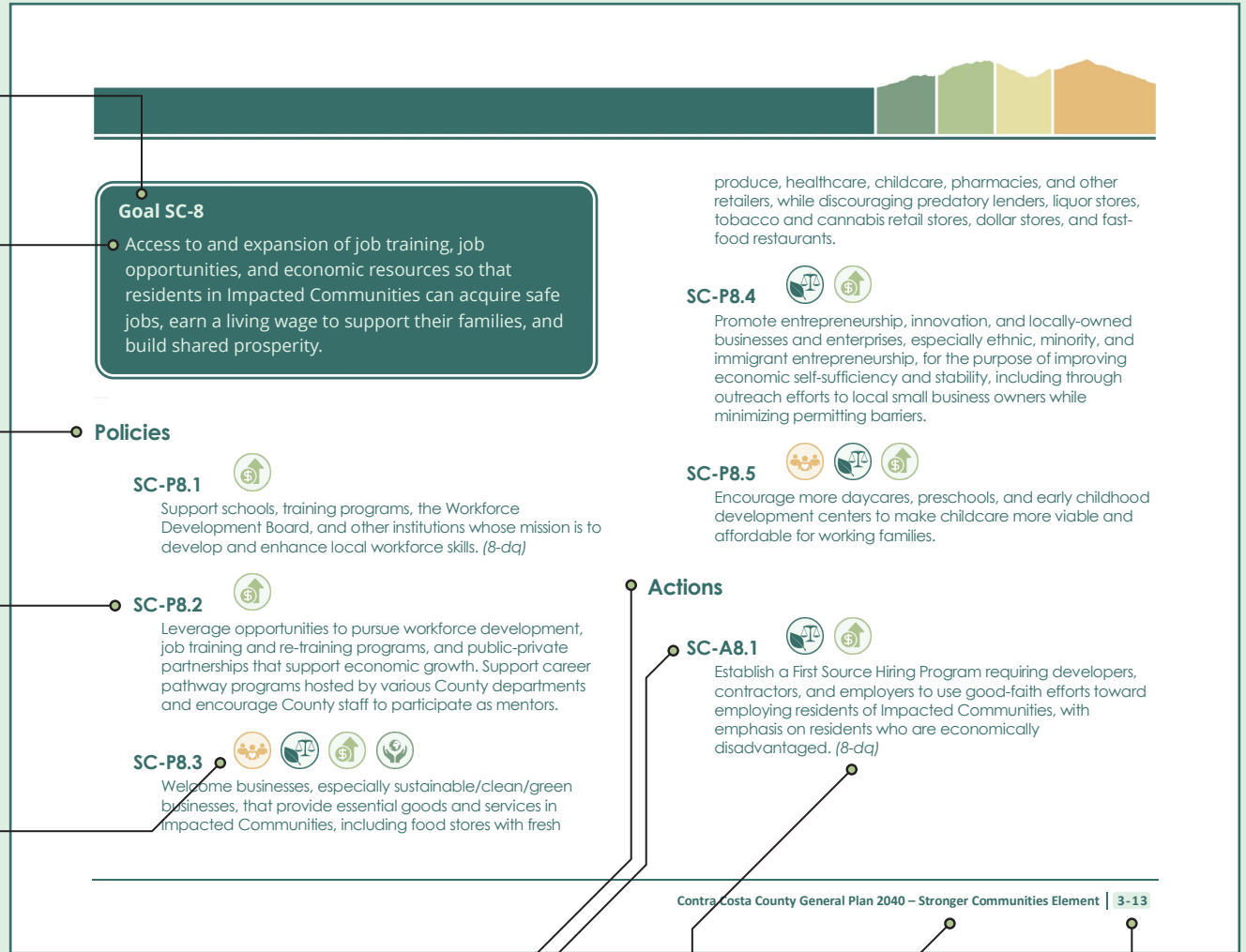
**Policies:** A policy is a specific statement that guides decision-making as the County works to achieve a specific goal. Policies represent statements of County regulation and set the standards used by decision-makers when considering proposed development and actions. These are on-going and require no further action.

**Policy Numbering:** The policy number is shown as the last number, supporting the goal it follows (e.g., SC-P8.2 = Stronger Communities Element, eighth goal, second policy). Policy numbers are not tied to action numbers.

**Icons:** Policies and actions related to the four themes of the General Plan – community health, environmental justice, economic development, and sustainability – are identified using these icons.

**Actions:** An action is a measure, procedure, or technique that helps the County achieve a specific goal. An action is something concrete that can and will be completed.

**Action Numbering:** The action number is shown as the last number, supporting the goal it follows (e.g., SC-A8.1 = Stronger Communities Element, eighth goal, first action). Action numbers are not tied to policy numbers.



**Parenthetical Reference:** These refer either to legislation (e.g., Assembly Bill [AB] 52) or goals, policies, and implementation measures in the existing General Plan that are somehow being carried forward in the General Plan. Existing goals are indicated by a number and capital letter (e.g., 3-A), existing policies are indicated by two numbers (e.g., 3-1), and existing implementation measures are indicated by a number and lower-case letter (e.g., 3-a). In most cases it is the concept or subject matter, not the actual wording, that is carried forward in the updated General Plan.

**Page Numbering:** Shows the chapter and page number (e.g., 3-13 = Chapter 3, page 13).

**Section Footer:** Identifies the element title.