

COMMUNITY PROFILES

Given the diversity of people, built environments, social and economic conditions, and natural landscapes across the county, this General Plan includes community-scale policy guidance in individual Community Profiles. The Community Profiles are intended to close gaps in countywide policies by addressing issues and opportunities that apply only to that specific community. Each Community Profile includes:

- 1
- Contextual information summarizing local character, setting, land use patterns, demographics, history, natural resources, natural hazards, community vulnerabilities, and other key data.
- 2
- A summary of the planned land uses in the community, as mapped in the General Plan Land Use Map.
- 3
- Guiding principles that formulate a vision for the future of the community, plus policies and actions to support that vision.



There are 22 Community Profiles in the Draft 2045 General Plan:

- Alamo/Castle Hill
- Alhambra Valley/Reliez Valley/Briones
- Bay Point
- Bethel Island
- Byron
- Canyon
- Clyde
- Contra Costa Centre
- Crockett
- Diablo
- Discovery Bay
- East Richmond Heights
- El Sobrante
- Kensington
- Knightsen
- Montara Bay/Rollingwood (i.e., Montalvin Manor, Tara Hills, Bayview, and Rollingwood)
- North Richmond
- Pacheco
- Port Costa
- Rodeo
- Saranap/Parkmead
- Vine Hill/Mountain View

Sample images from the Bay Point Community Profile are shown in this display. Copies of each Community Profile are available to review at this open house.

Context

Community Overview

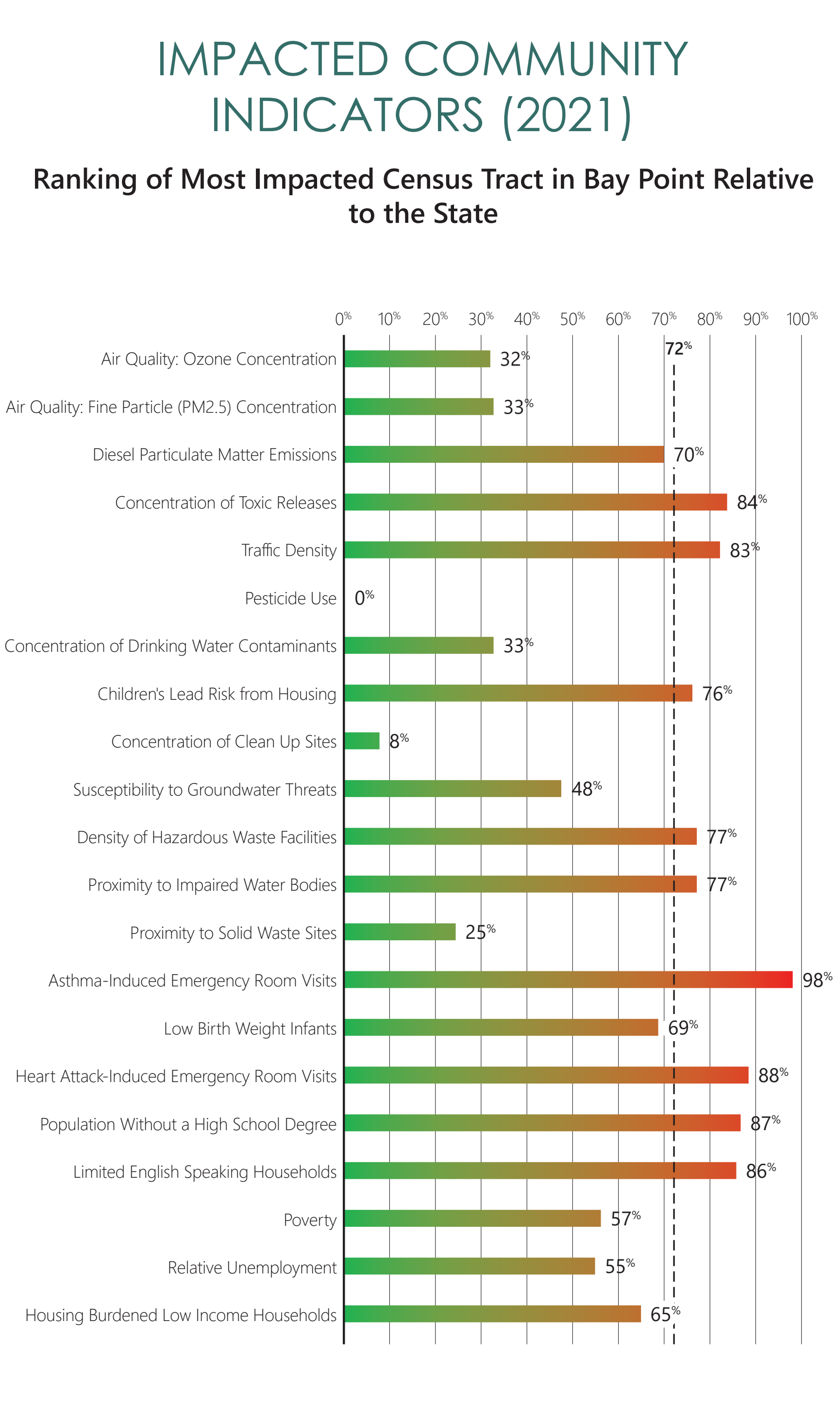
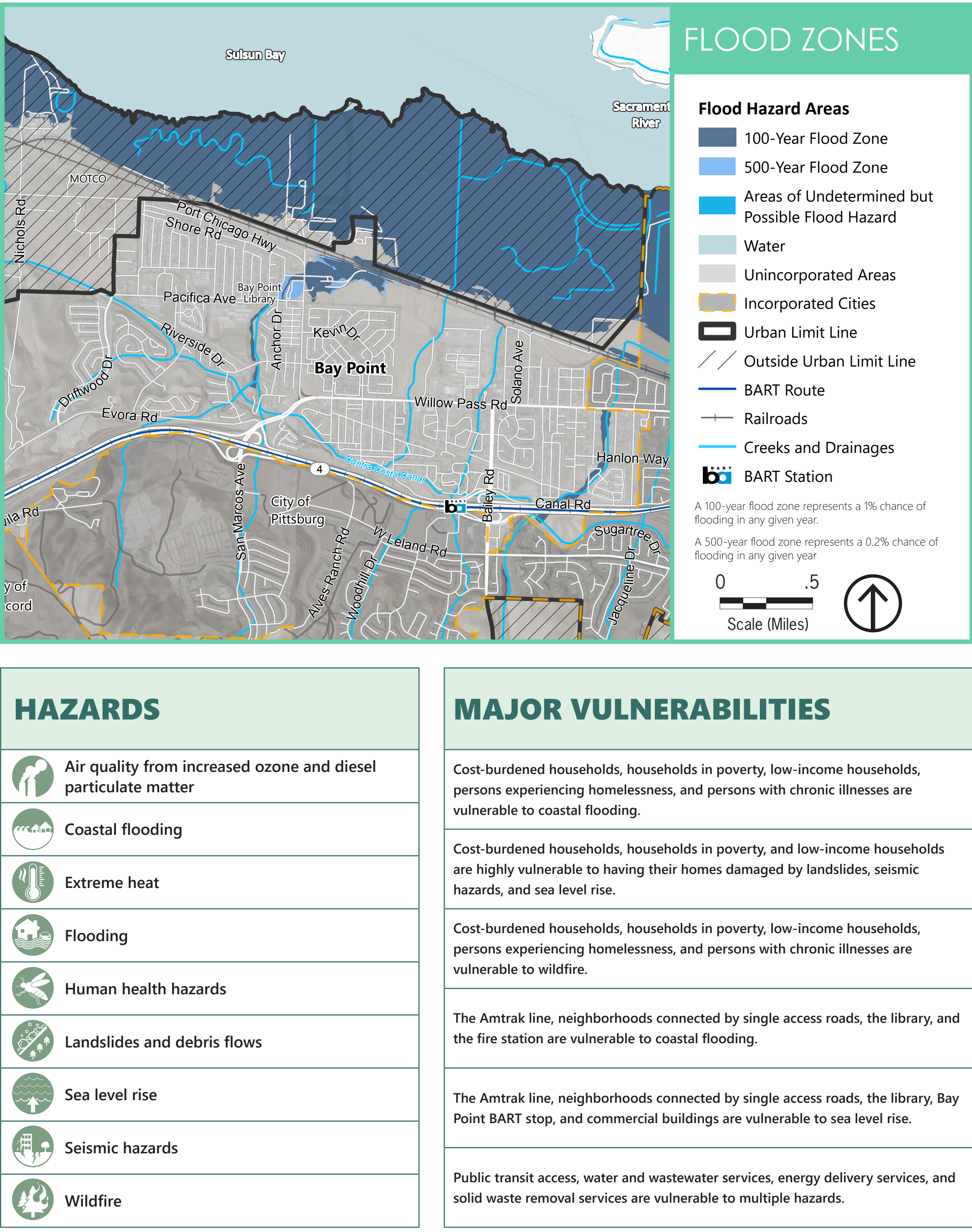
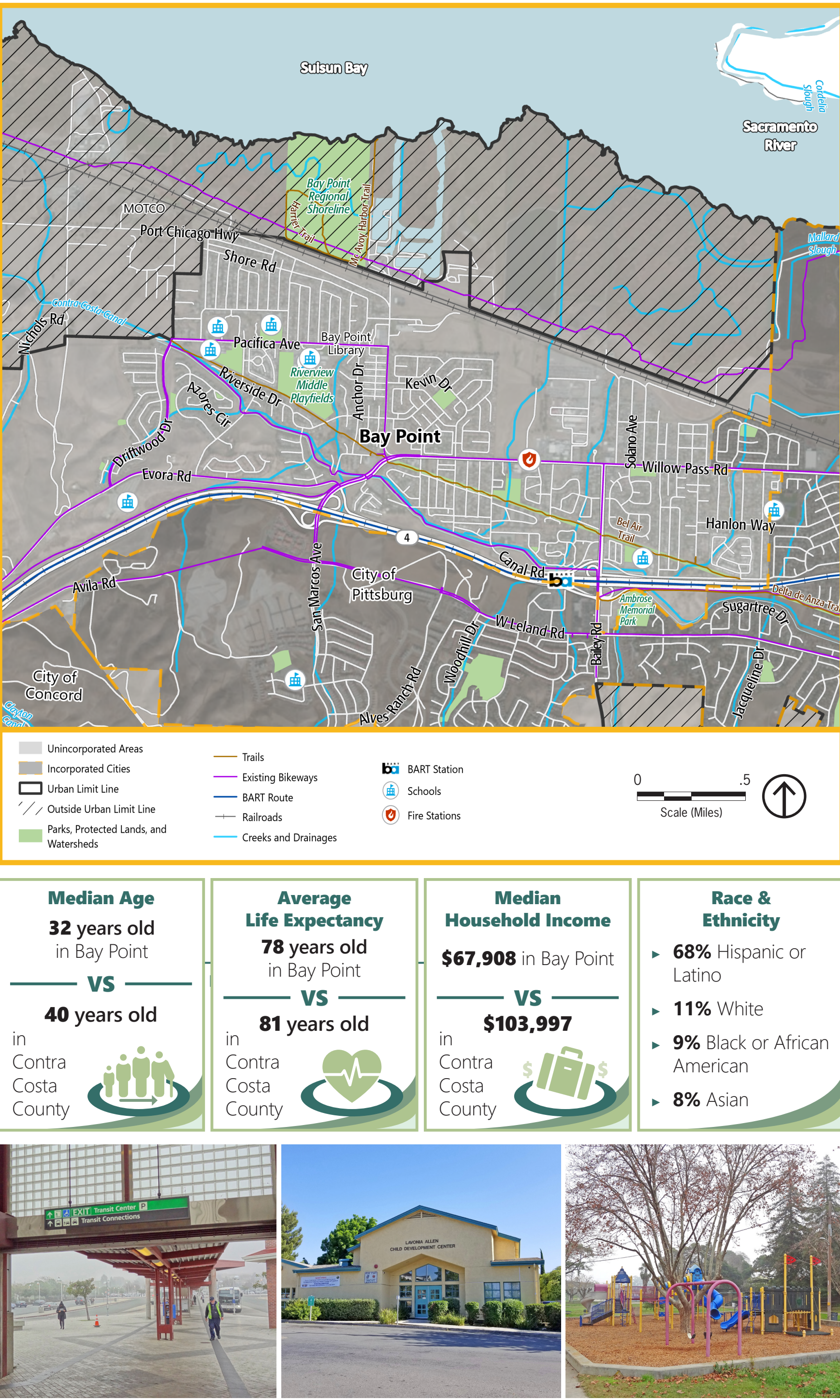
Each Profile describes the community and presents an overview map, along with demographic information that compares median age, average life expectancy, median household income, and race and ethnicity to countywide demographics.

Hazards & Vulnerabilities

Each Profile describes environmental hazards and major vulnerabilities in the community, including through maps of key hazards. This information is based on a Vulnerability Assessment that considers how climate change is likely to affect populations, buildings and infrastructure, economic assets, natural resources, and community services in the unincorporated county.

Impacted Communities

The Profiles for Impacted Communities include an additional section that highlights environmental justice issues through maps and charts, including a chart like the one below that shows how the community ranks for various environmental justice factors compared to the rest of the state.



Guidance

Planned Land Uses

Each Profile includes a brief description of the planned land uses within the community, as depicted on the General Plan Land Use Map, along with representative images.

Guiding Principles, Policies, & Actions

Each Profile concludes with a set of guiding principles that articulate the community's vision for its future, followed by policies and actions to guide decisions and programs that are specific to the community and support this vision.

