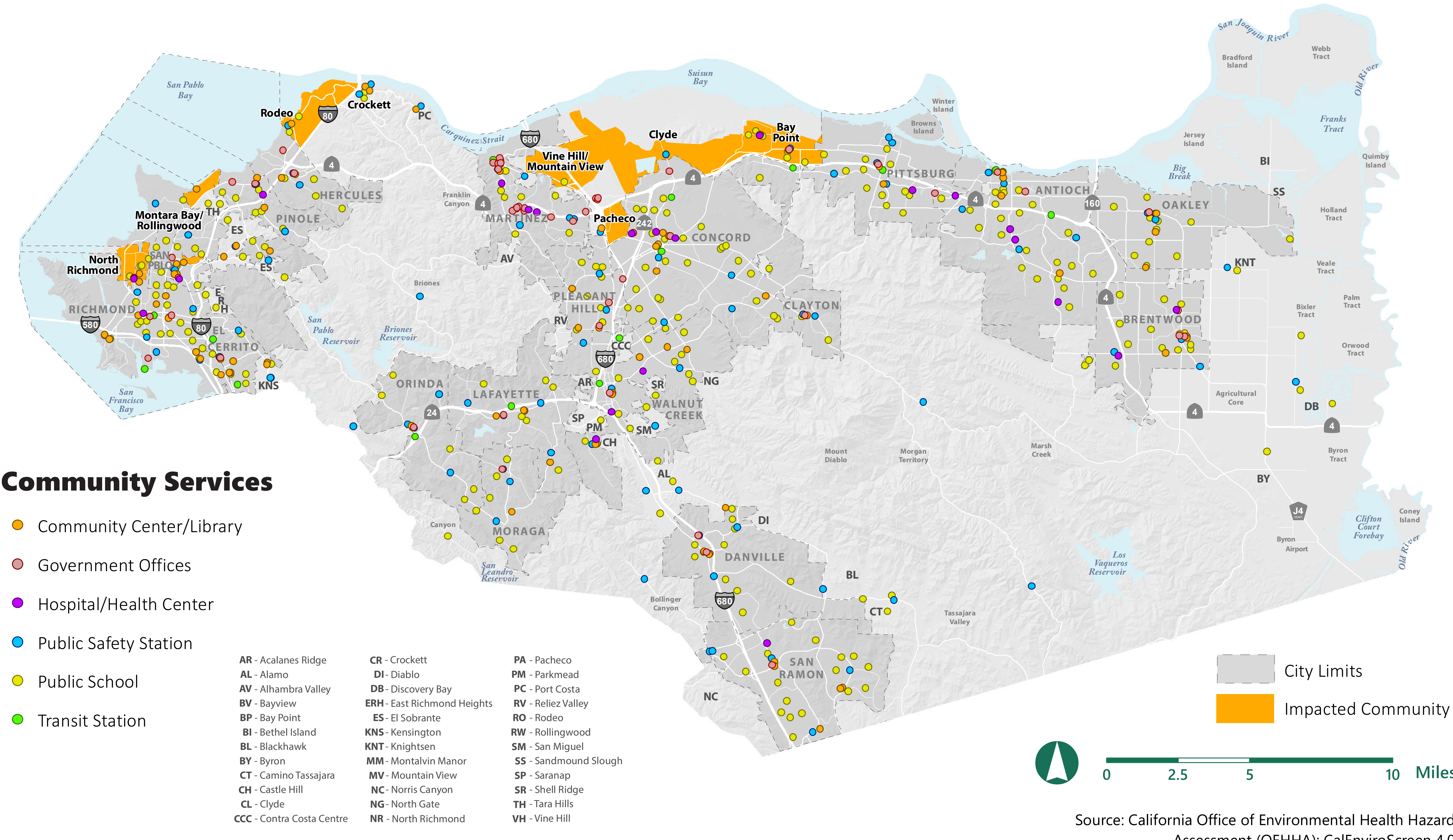


ENVIRONMENTAL JUSTICE



Throughout California, low-income communities and communities of color have experienced a combination of historical discrimination, neglect, and political and economic disempowerment. The result is that today they are impacted with higher pollution burdens and associated health conditions than other communities, as well as social and economic disadvantages like poverty or housing instability. Many low-income households and communities of color in

unincorporated Contra Costa County are concentrated in neighborhoods where they continue to face significant threats to their health and livelihood. The Draft General Plan includes a map of these “Impacted Communities” and many of its policies and actions prioritize improving conditions in these communities. The map below identifies these Impacted Communities in relation to existing community facilities, which are an important component of environmental justice.



Key Components

- Social & Economic Advantages
- Healthy Neighborhoods
- Economic Empowerment
- Community Engagement
- Public Facilities, Infrastructure & Services
- Healthy Air Quality
- Resilience & Safety



Social & Economic Advantages

The Draft 2045 General Plan strives to ensure an equitable distribution of social and economic resources among all communities in the county so that Impacted Communities are not disproportionately burdened by pollution or other hazards, have access to economic opportunities, and benefit from future development, including through policies and actions that:

- Plan for a transition from highly polluting industries to a healthier and more sustainable economy that provides living-wage jobs.
- Negotiate community benefits agreements that address Impacted Communities’ expressed needs, securing benefits to the community that exceed the inherent project benefits.
- Promote walkable districts that provide neighborhood-serving retail, services, and public amenities to residents of Impacted Communities.
- Investigate economic and wealth-building tools to support local interests, community development, and long-term community ownership and housing affordability in Impacted Communities.



Public Facilities, Infrastructure & Services

The Draft 2045 General Plan works to ensure that residents of Impacted Communities have access to quality public services that meet their needs, including through policies and actions that:

- Prioritize investments in public facilities, infrastructure, and services that benefit Impacted Communities.
- Establish funding and financing mechanisms in Impacted Communities to provide and maintain community-desired public facilities and services.
- Prioritize and fund code enforcement and clean-up of illegal dumping in Impacted Communities.
- Implement and maintain urban greening and green infrastructure in Impacted Communities.



Community Engagement

The Draft 2045 General Plan aims to empower all residents to participate in local governance, with a specific focus on building strong, collaborative partnerships with community members in Impacted Communities, including through policies and actions that:

- Notify and engage Impacted Community members, organizations, and leaders early in the planning process in languages used by community members, sharing materials that are easy to understand in a variety of print and online formats, and holding meetings at convenient times and locations for residents.
- Designate County staff to serve as liaisons for each Impacted Community.
- Meet on a semi-annual basis with Impacted Community members and use their input to inform the County’s annual budgeting process.