



# ENVISION CONTRA COSTA

Contra Costa Watershed Forum

3/14/2024

# Envision Contra Costa



**General  
Plan**



**Climate  
Action  
Plan**



**Zoning  
Ordinance**



# Envision Contra Costa



**General  
Plan**



**Climate  
Action  
Plan**



**Zoning  
Ordinance**



**Environmental Impact Report**

# What is the General Plan?

- » **“Constitution” for local planning**
  - Every city and county must adopt a General Plan
  - The General Plan is a jurisdiction’s highest land use planning document and the basis for its land use decisions
  - Establishes a vision and provides direction for future development
  - Balances growth, conservation, and quality of life
  - Contains context, maps/diagrams, goals, policies, and actions to guide land use



# General Plan Themes



**Environmental Justice**



**Community Health**



**Economic Development**



**Sustainability**

# General Plan Elements

Stronger Communities

Land Use

Transportation

Housing

Conservation, Open Space, and Working Lands

Public Facilities and Services

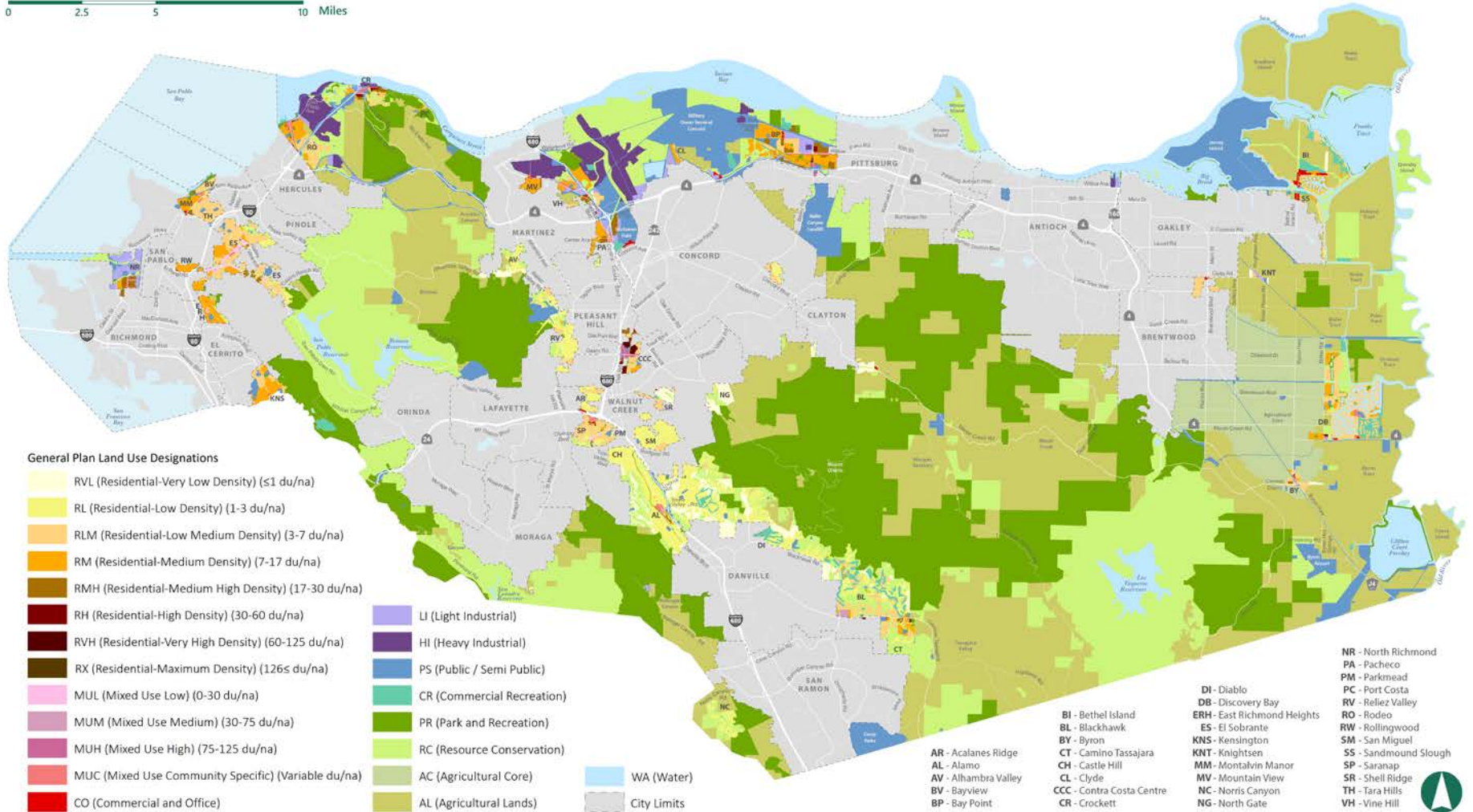
Health and Safety

Growth Management



# General Plan Land Use Map

0 2.5 5 10 Miles



# Goals, Policies, and Actions

## Goal

An end statement describing the general result sought by the community. Each goal has associated policies, and most have associated actions.



## Policy

A statement establishing regulation or otherwise guiding decision-making as the County works to achieve a goal.



## Action

A measure, procedure, or activity necessary for the County achieve a specific goal. An action is something concrete that can and will be completed.



# 7

## CONSERVATION, OPEN SPACE, AND WORKING LANDS ELEMENT

Contra Costa County encompasses a large geographic area containing diverse species, habitats, open spaces, working lands, and natural and cultural resources. This Element promotes conservation, preservation, and enhancement of these critical assets. It is organized around the following nine sections:

- The **Open Space Framework** section includes policy guidance to conserve open space throughout the county to protect ecological resources, provide recreation opportunities, and improve resilience to climate change-related impacts.
- The **Agricultural Resources and Working Lands** section includes policy guidance to protect agricultural lands from conversion to urban uses and support a thriving agricultural economy.
- The **Ecological Resources and Natural Systems** section includes policy guidance to preserve and enhance important ecological resources, including creeks, wetlands, riparian areas, and upland habitat.
- The **Water Resources** section includes policy guidance to sustainably manage surface water and groundwater resources, and protect and enhance the Sacramento-San Joaquin River Delta and shoreline areas.
- The **Historic and Cultural Resources** section includes policy guidance to support identification and preservation of archaeological, historic, and tribal resources in the county, and underscores a commitment to

consult and collaborate with local tribes throughout the planning process.

- The **Scenic Resources** section includes policy guidance to protect the abundant scenic resources in the county, including scenic routes, scenic ridges, and other natural features with scenic value.
- The **Mineral Resources** section includes policy guidance to support mineral extraction operations, which are an important part of the regional economy, while avoiding land use conflicts and negative environmental impacts.
- The **Energy Resources** section includes policy guidance to conserve energy and support a transition to zero-carbon energy sources, such as wind and solar.
- The **Conservation, Open Space, and Working Lands Element Performance Measures** describe how the County will track its progress in achieving some of the major objectives expressed in this Element.

This General Plan highlights policies and actions that address four major themes that serve as a framework for the Plan. For the reader's ease, policies and actions related to these themes are identified throughout the General Plan using the following icons. The policies and actions related to each theme are also compiled in Appendix A. See Chapter 1 for more information about each theme.

# Policy Guidance Example

## Goal COS-9

Protected, preserved, and enhanced scenic quality, recreational value, and natural resources of the San Francisco Bay/Sacramento-San Joaquin Delta estuary system and shoreline.

## Policies

### COS-P9.1

Advocate for increased freshwater flow into, through, and from the Delta into San Francisco Bay, and support other efforts to protect and improve Delta water quality.

### COS-P9.2



Support continued maintenance and improvement of Delta levees to protect water quality, ecosystems, agricultural land, and at-risk communities.

### COS-P9.3

Oppose all efforts to construct an isolated conveyance (e.g., peripheral canal, tunnel) or any other water diversion system that reduces Delta water flows unless and until it can be conclusively demonstrated that such a system would protect, preserve, and enhance water quality and fisheries of the San Francisco Bay/Delta estuary system.

### COS-P9.4



Plan for land uses along shorelines that do not pose a threat to Bay or Delta resources, including water quality and shoreline and marshland habitats.\*

### COS-P9.5



Support efforts to expand and enhance public access to the Bay shoreline and Delta.

### COS-P9.6

Prohibit private development on tule islands, sand dunes, and levee remnants.

### COS-P9.7

Evaluate cumulative impacts on boating safety when reviewing applications for new or expanded marinas and docks.

### COS-P9.8

Require design excellence for new development along Bay and Delta waterways to enhance the visual quality of these areas.

## Actions

### COS-A9.1



Amend County Ordinance Code Title 8 – Zoning to incorporate the following requirements for new or expanded marinas and docks:

# Sustainability



## » Sustainable Land Use and Transportation Policy Highlights

- Focus on infill development, locate housing and jobs in proximity, and encourage high-density, mixed-use development near transit with opportunities to walk and bike
- Increase access to zero-emission vehicles and reduce dependence on personal vehicles

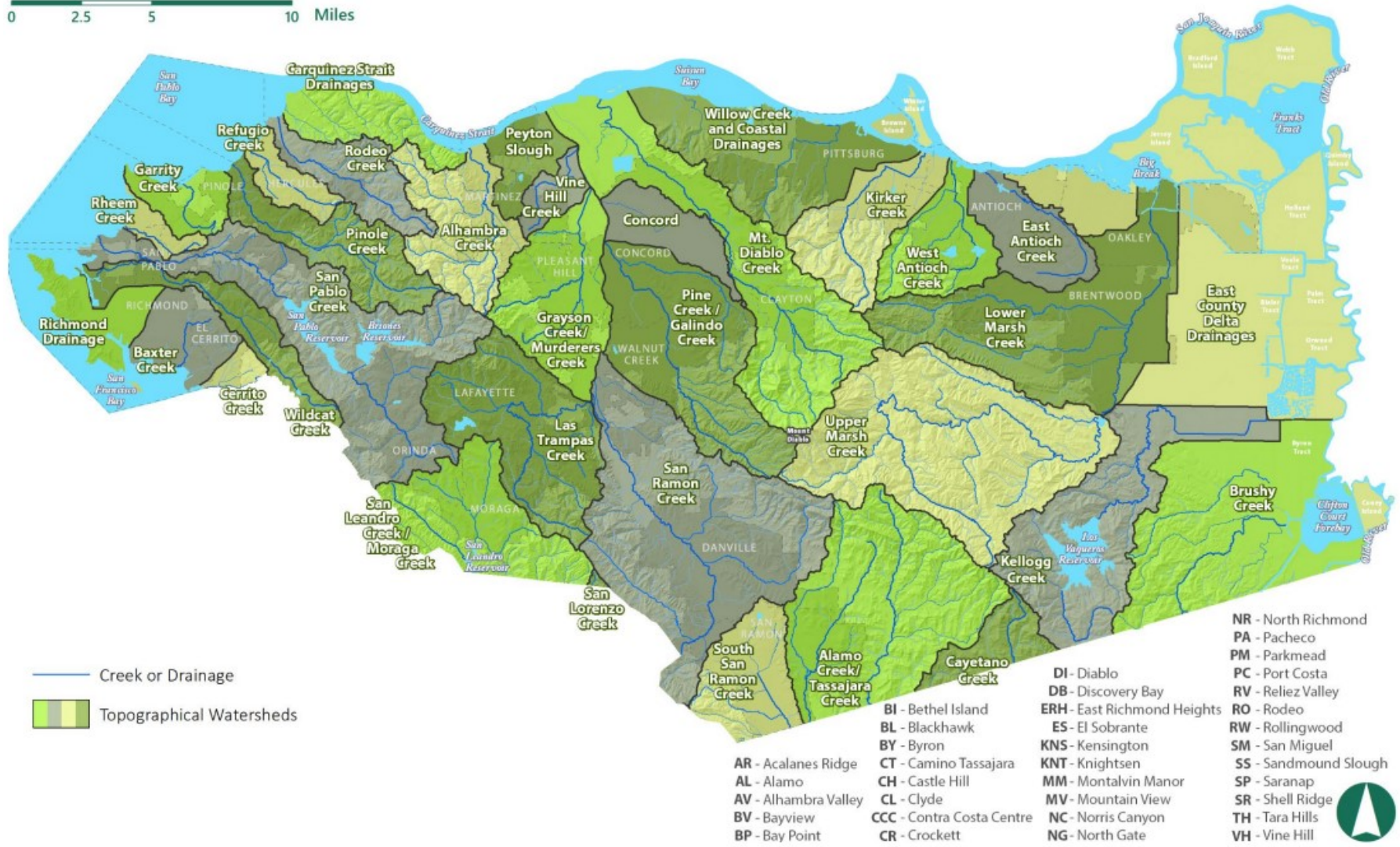
## » Natural and Working Lands Policy Highlights

- Preserve open space and agriculture
- Prioritize the health and viability of natural and working lands
- Maintain the 65/35 Land Preservation Standard and Urban Limit Line



# Watersheds

0 2.5 5 10 Miles



# Priority Conservation Areas

0 2.5 5 10 Miles



Source: Association of Bay Area Governments (ABAG)  
Metropolitan Transportation Commission (MTC)

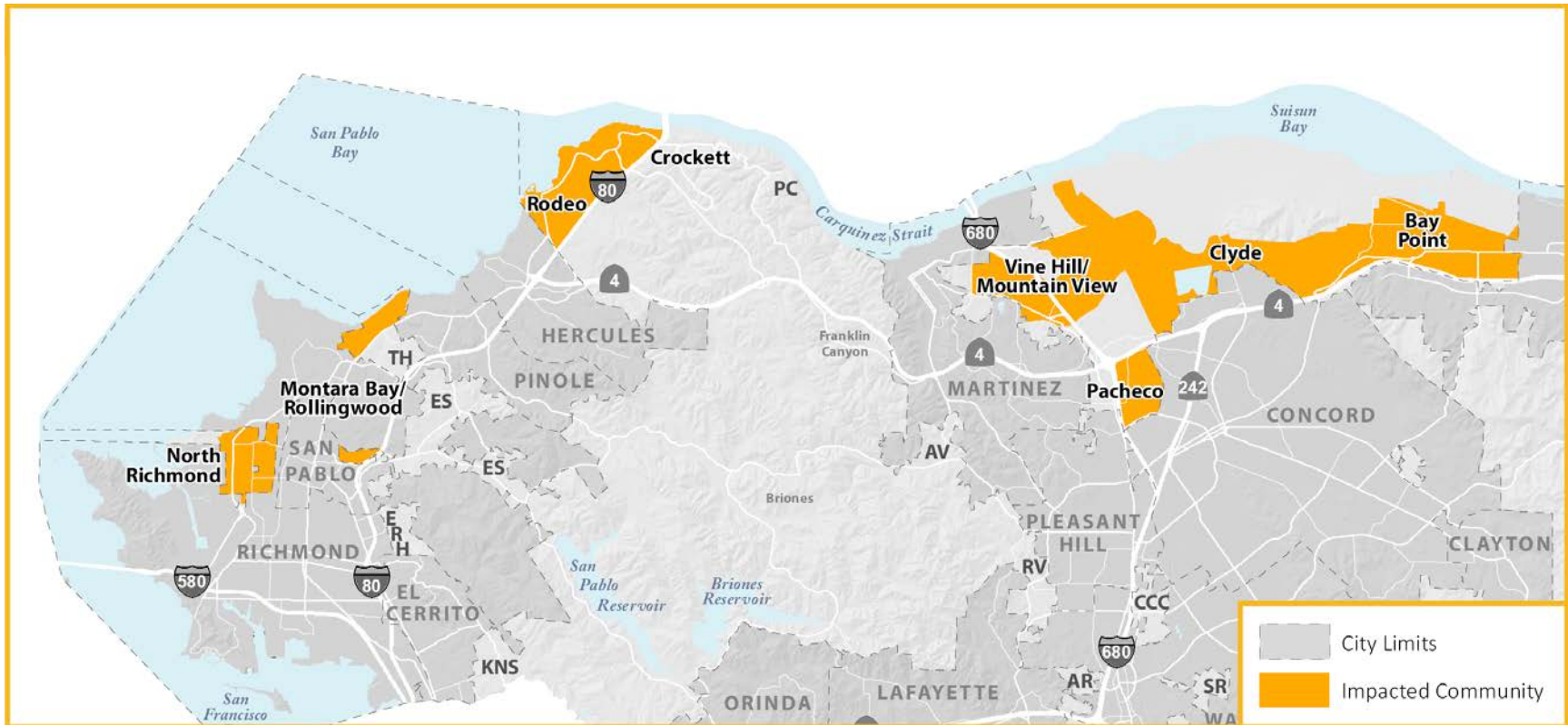
- AR - Acalanes Ridge
- AL - Alamo
- AV - Alhambra Valley
- BV - Bayview
- BP - Bay Point
- DI - Diablo
- DB - Discovery Bay
- BL - Blackhawk
- BY - Byron
- CT - Camino Tassajara
- CH - Castle Hill
- CL - Clyde
- CCC - Contra Costa Centre
- CR - Crockett
- BI - Bethel Island
- BL - Blackhawk
- BY - Byron
- CT - Camino Tassajara
- CH - Castle Hill
- CL - Clyde
- CCC - Contra Costa Centre
- CR - Crockett
- DI - Diablo
- DB - Discovery Bay
- BL - Blackhawk
- BY - Byron
- CT - Camino Tassajara
- CH - Castle Hill
- CL - Clyde
- CCC - Contra Costa Centre
- CR - Crockett
- NR - North Richmond
- PA - Pacheco
- PM - Parkmead
- PC - Port Costa
- RV - Reliez Valley
- RO - Rodeo
- RW - Rollingwood
- SM - San Miguel
- SS - Sandmound Slough
- SP - Saranap
- SR - Shell Ridge
- TH - Tara Hills
- VH - Vine Hill



# Environmental Justice



» Impacted (aka “disadvantaged”) Communities identified through CalEnviroScreen 4.0



# Environmental Justice



## » Clean Industry & Jobs Policy Highlights

- Plan for a transition from highly polluting industries to a net-zero emission economy that provides living-wage jobs
- Require new or expanded industry to mitigate pollutants at the source and separate sources of pollution from sensitive receptors (e.g., homes, schools)

## » Public Engagement Policy Highlights

- Strengthen public trust in planning processes through transparency, accessibility, and accountability
- Strive for more diverse representation on County boards, commissions, and committees
- Conduct meaningful public outreach, especially relayed to major projects



# Economic Development



## » Northern Waterfront Policy Highlights

- Strengthen the economic viability of the Northern Waterfront
- Promote expansion of clean manufacturing and technology
- Support development of Priority Production Areas in Bay Point and North Concord/Pacheco/Vine Hill area

## » Local Workers and Businesses Policy Highlights

- Support training programs and institutions that develop and enhance local workforce skills
- Adopt an Economic Development Strategy
- Address the jobs/housing imbalance
- Streamline permitting for businesses that benefit communities





# Community Health



## » Healthy Lifestyles Policy Highlights

- Increase access to fresh, healthy, and affordable food
- Partner with other agencies to fund, design, and maintain high-quality parks, trails, and open spaces
- Provide opportunities for walking, biking, and other physical activity

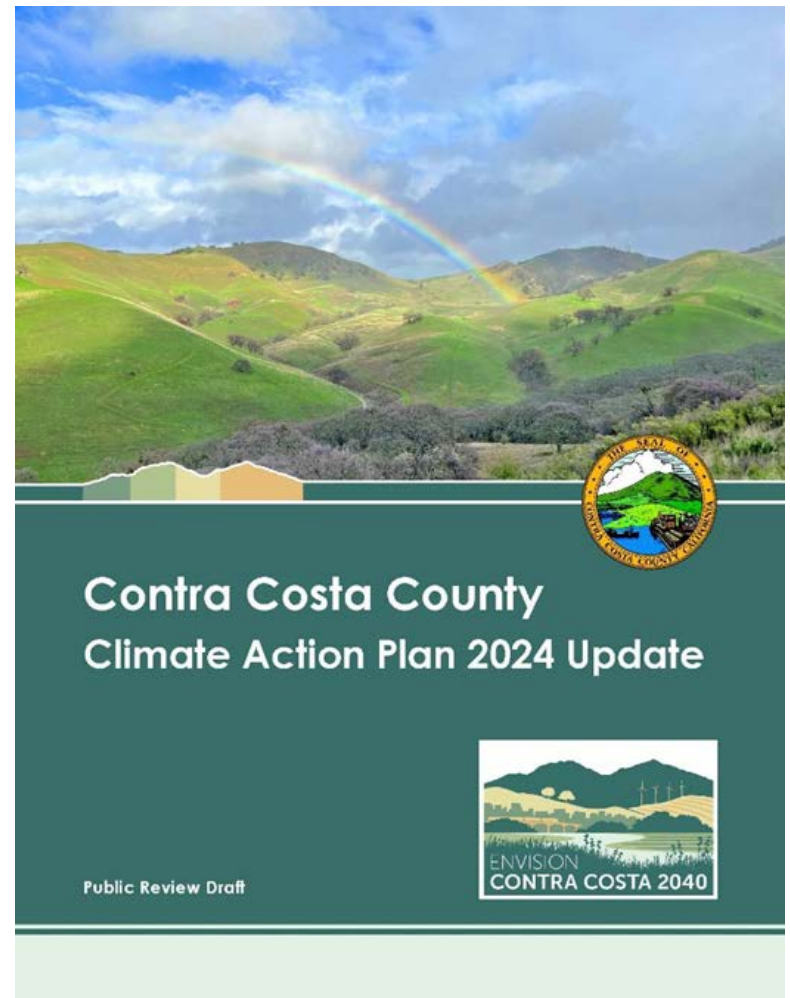
## » Vibrant Neighborhoods Policy Highlights

- Promote cultural, community-driven, and beautification events
- Incorporate public art and beautification into new development
- Promote housing and infill development to revitalize existing urban areas



# What is the CAP?

- » **The County's plan to address climate change**
  - Reduce GHG emissions through 2045 and beyond
  - Improve climate resilience and adaptation
  - Promote equity on climate issues
  - Demonstrate County leadership
- » **Implements the climate-related policy direction of the General Plan**
- » **Streamlines environmental review for qualifying projects**



# Climate Action Plan (CAP) Goals

Clean and Efficient  
Built Environment

No Waste Contra  
Costa

Reduce Water Use  
and Increase  
Drought Resilience

Clean  
Transportation  
Network

Resilient  
Communities and  
Natural  
Infrastructure

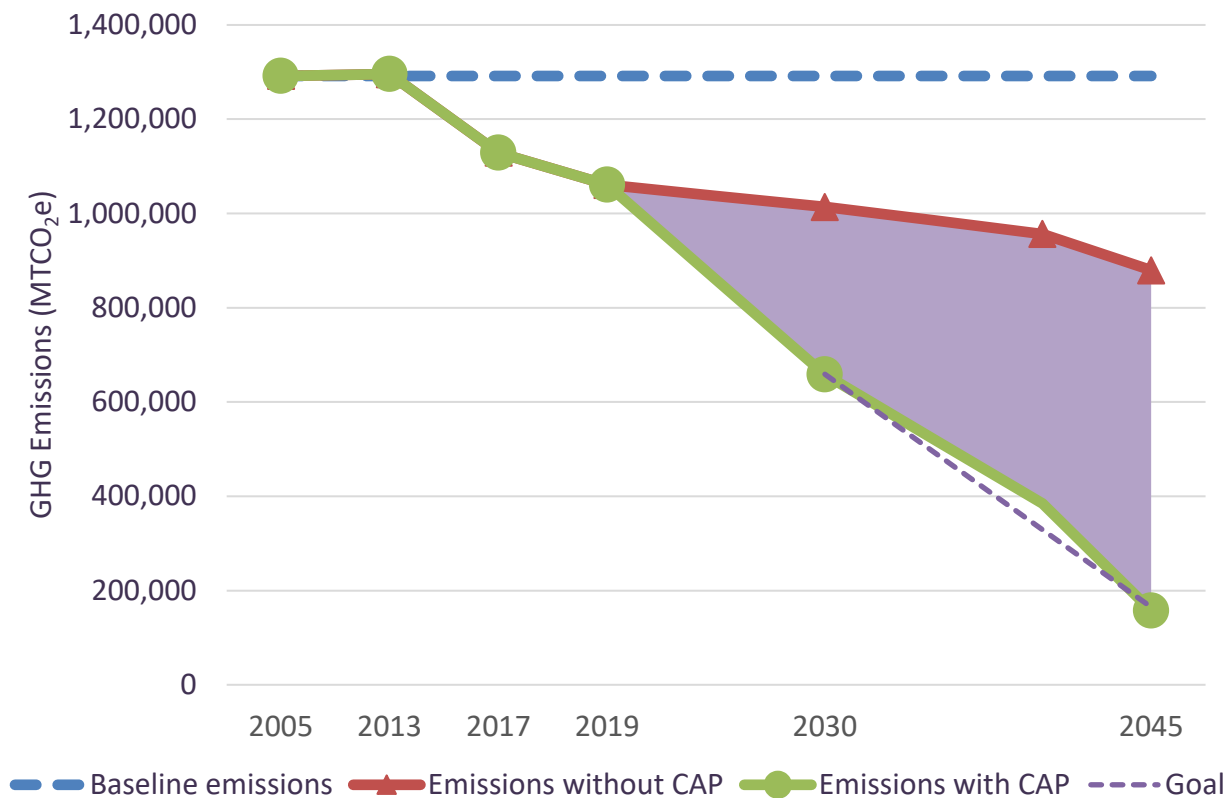
Climate Equity

Leadership

Implementation

# Achieving Our Goals

- » CAP strategies provide a path to achieve the State's 2030 and 2045 GHG emission reduction goals and support the State's goal of net carbon neutrality by 2045



# Schedule

- » **April 8: Public comment period for Draft General Plan, CAP, and EIR ends**
- » **April-May: Study sessions with Planning Commission and Board of Supervisors to review Public Comments on Draft General Plan and CAP**
- » **June: Publish Revised Draft General Plan and CAP, and Final EIR**
- » **June-July: Planning Commission hearings**
- » **July-August: Board of Supervisors hearings – adoption**

# Online Participation



## Envision Contra Costa 2040

Home	Overview ▾	Events ▾	Documents ▾	Participate Online ▾	Contact Us	Additional Resources
------	------------	----------	-------------	----------------------	------------	----------------------

- ▶ **Public Review Draft Contra Costa County 2045 General Plan**
- ▶ **Public Review Draft Contra Costa County Climate Action Plan 2024 Update**
- ▶ **Environmental Analysis Documents**
- ▶ **Housing Element Documents**
- ▶ **Background Documents**
- ▶ **Existing Conditions Documents**

- 
- ▶ **Archive of Previous General Plan and Climate Action Plan Draft Documents**

 **Past Meeting Materials**

[envisioncontracosta2040.org/documents/](https://envisioncontracosta2040.org/documents/)

# Online Participation



## Envision Contra Costa 2040

[Home](#)[Overview ▾](#)[Events ▾](#)[Documents ▾](#)[Participate Online ▾](#)[Contact Us](#)[Additional Resources](#)

The Draft Contra Costa County 2045 General Plan and Climate Action Plan 2024 Update are available for public review. Tell us how we did!

Learn more and comment on the [Draft General Plan and Climate Action Plan 2024 Update](#).

**Sign up for our mailing list!**

Enter your email address:

**Sign up**

[envisioncontracosta2040.org/online-engagement/](https://envisioncontracosta2040.org/online-engagement/)



# ENVISION CONTRA COSTA

[EnvisionContraCosta2040.org](https://EnvisionContraCosta2040.org)

[AdvancePlanning@dcd.cccounty.us](mailto:AdvancePlanning@dcd.cccounty.us)



# Contact Information

**Will Nelson, Principal Planner**

**(925) 655-2898**

**[will.nelson@dcd.cccounty.us](mailto:will.nelson@dcd.cccounty.us)**

**Daniel Barrios, Senior Planner**

**(925) 655-2901**

**[daniel.barrios@dcd.cccounty.us](mailto:daniel.barrios@dcd.cccounty.us)**

**[envisioncontracosta2040.org](http://envisioncontracosta2040.org)**